

# village NEWSLETTER

www.ridgefieldpark.org

VOL. 36 NO. 1

Ridgefield Park, N.J.

MARCH, 2019

## SPRING HAS SPRUNG! — ALMOST

On February 2nd, The Groundhog Punxsutawney Phil said we would have an early Spring. Well, now here we are. And whether you think that Phil was right or wrong, the official start of **Spring is here — March 20th.** And that means that it is time to get outside, breathe in the warmer Spring air, and start to get moving.

Spring is also the time to start your **Spring Cleaning** — inside and out. If you think about it, it is very refreshing to open the windows, air out the house or apartment, switch your winter wardrobe for warm weather clothes, and start to spruce up the outside of the house. And while you are doing it, you should take a moment to notice the daffodils and other Spring Flowers emerging in our gardens; and look forward to the warmer months to come. It is a good time to be alive.

**WHAT IS HAPPENING AROUND OUR VILLAGE?** Much!! Sports such as baseball, soccer, tennis, fishing, walking, hiking and a lot of other fun things to do. The **Community Gardens** (in McGowan Park and Fellowship Park) are reawakening. If you want to get a garden plot, then contact the Community Garden by going to the community garden section of the village website and click on “Community Garden Application” to download one; or picking up an application at the Village Clerk’s Office. Don’t wait until all the garden plots are taken.

The planters on Main Street and in our neighborhood districts will be getting new flowers for the Spring and Summer. If interested in helping to plant, contact the **Village Gardeners** by contacting John Anlian at the Municipal Bldg (201-641-4950 Ext 2 or via e-mail: [johananlian@yahoo.com](mailto:johananlian@yahoo.com)) The Village Gardeners always need some more volunteers.

**Easter** is a little late this year. But, the Easter Lillies and other Spring Flowers will be available at the IGA, This & That Hardware, and Dayle’s Flower Shop. They always have some very good deals.



The developments on the other side of Route 95 are slowly moving forward. The big project known as “The Bald Eagle Development” or “Skymark” has weathered some financial storms and is slowly moving forward. That project is located east of Route 95 and south of Route 46. We may see some real activity within the next 24 months. Another potential project is located in the Overpeck Office Park; and likewise we may see some progress during the coming year. While we await these developments, stop in at the AMC 12Plex Movie Theater and see a good movie, The new seats are really comfortable.

On May 11th, the RP Environmental Commission and Green Team will be holding the annual **Earth Day** Celebration at Riverside Park located on the banks of the Hackensack River (behind the DPW building on Industrial Avenue). A lot of very cool things to see and do; and boat rides on the Hackensack River by the Hackensack Riverkeeper. Get a view of the Village from the water. Very Cool!!!

Also on May 11th, the Shade Tree Commission will be celebrating **Arbor Day** also at Riverside Park. Hey — they also have a new program where YOU can become a **SHADE TREE BLOCKRANGER**. Pretty cool. Take a look at the specifics elsewhere in this Newsletter.

**Nature Preserve** — The Village received a \$200,000 matching grant from the Bergen County Open Space Trust Fund for the creation of a nature trail, boardwalk and other amenities in our Nature Preserve (the natural land area north of the High School). Work on that project will hopefully start this summer.

Don’t forget — **2nd Quarter Real Estate**

**Taxes are due on May 1st.** The good news is that you still have about a month and half before they are due. And when you are stopping in at the Municipal Building, why not sign up for the **VILLAGE POOL**. The temperatures may be mild now, but the hot summer weather will be here before you know it. There is nothing like getting home from a long hot work day, changing into your bathing suit and splashing into the pool. What a great feeling!

On the last Monday in May (May 27th) we will again be celebrating **MEMORIAL DAY**. The celebration, originally called “Decoration Day”, started after the Civil War when Americans honored those who died in military service for our country. It was widely expanded after World War II, and this year’s ceremony will take place at 11am at the corner of Euclid Avenue and Mt. Vernon Street.

**FLAG DAY** is on June 14th. Don’t forget to proudly display our American Flag.

The RP Arts Association will be having an Arts Festival on Saturday, June 15th from 6pm to 9pm at the corner of Main and Grove Streets. Music, food, and art. Stop by. It sounds like fun.

**VOLUNTEER** — We have many organizations and committees in town that are looking for new smiling faces to join them in helping to keep Ridgefield Park a great place to live. Come on!! Join one of these groups. If you are not sure what group to join, leave your name, contact information, and any preferences at the Village Clerk’s Office and someone will get back to you to introduce you to one of these great (and fun) organizations. **DON’T BE SHY!** As the Nike commercials say: **JUST DO IT.**

Give us some feedback. Let us know how we are doing; how you are doing; do you have any suggestions? Take a look at our website: **RidgefieldPark.org** to see other information and news

Happy Easter! Happy Spring!

Commissioner John Anlian  
Commissioner Theresa Kohles  
Commissioner Adam MacNeill  
Commissioner Hugo Poli  
Mayor George Fosdick



## RIDGEFIELD PARK POLICE DEPARTMENT

### Juvenile Bureau News

The Ridgefield Park Police Department, in cooperation with the Little Ferry Police Department, will be conducting the 15th annual Junior Police Academy Program. The Junior Police Academy will be a five-day program and will be open to boys and girls who will be completing sixth, seventh or eighth grade in June 2019.

Goals of the program are: to expose Village youths to police work through an enjoyable but disciplined forum; to allow members of the police department to interact with Village juveniles in a positive way; and to reinforce the consequences of negative behavior, violence and substance abuse. The week will consist of physical conditioning, military drill, and various hands-on experiences. There will be guests from federal, state and county law enforcement agencies who will provide demonstrations of their expertise. A one-day field trip is also being planned.

The program is tentatively scheduled to run sometime in late June or early July. Applicants must be permanent residents of the Village of Ridgefield Park. Twenty-five juveniles from Ridgefield Park and twenty-five juveniles from Little Ferry will be chosen to participate in the program. Applications will be accepted on a first-come, first-serve basis. The applications will be distributed through the school system and will also be available at Ridgefield Park Police Headquarters in March 2019. Parents can contact Det. Robert DiStasi at [rdistasi@rppd.org](mailto:rdistasi@rppd.org) or stop in at police headquarters with any questions or concerns you may have.

### Fundraising Update

The Ridgefield Park Police Department and PBA Local 86 would like to extend our gratitude to all Village residents and businesses who generously donated to our annu-

al fund drive mailing. Please be reminded that PBA Local 86 and the Ridgefield Park Police Department Goodwill are the only organizations connected to our department. We absolutely do not solicit donations by telephone under any circumstances. Any requests for donations from any other police organizations should be carefully scrutinized. Please contact police headquarters at (201) 641-6400 if you have any questions or uncertainties.

### Motorized Scooters (GO-PEDS)

No person, except for an operator with a mobility-related disability, shall operate a motorized scooter upon any public street, highway or sidewalk. Additionally, no person shall operate a motorized scooter on the property of another without the consent of the owner of that property or the person who has a contractual right to the use of that property. (39:414.12)

### Fraud Alerts

Tax season is upon us and many Village residents have received fraudulent phone calls from the Internal Revenue Service. We would like to remind residents to be cautious when dealing with individuals soliciting private information via the telephone or internet. If you are unsure if the call is legitimate, ask for a contact name and information and inform the caller that you will be in touch with them at a later date and time. Please do not hesitate to contact the police department at anytime, regarding any matter where you require assistance.

### Autism and Special Needs Database

The Ridgefield Park Police Department maintains a database on all autistic and special needs residents. The database is voluntary and is designed for families who wish to complete a Hidden Disability Registration Form. The purpose of the database is intended to provide police officers with quick access to important information which can be used to aid in the recovery of a missing autistic person as well as the identification of a located person who may be autistic or have special needs. The information stored in this database is for police department use only and shall not be shared with the public for any reason. [www.rppd.org](http://www.rppd.org)

### RPPD Personnel

Ptl. Corey Buljeta was sworn in as a member of the Ridgefield Park Police Department in a private ceremony with his family. Ptl. Buljeta has begun his training at the Bergen County Police Academy and is

scheduled to complete his training in June. Upon completion, Ptl. Buljeta will undergo field training at the Ridgefield Park Police Department.

Ptl. Nicholas Perna recently resigned from the Ridgefield Park Police Department to accept a position with the Paramus Police Department. We thank him for his service to the Village and wish him well in his new position.

### No Overnight Truck Parking

Village residents are reminded that they are not permitted to park any truck, bus, tractor, trailer, semi-trailer, boat, camper or other motor vehicle with a gross vehicle weight of more than 5,500 pounds and/or a length of more than 18 feet and/or a height of more than seven feet and/or equipped with more than four tires and/or equipped with any fixed appurtenance on any day of the week on any street within the Village of Ridgefield Park between the hours of 10:00 PM and 7:00 AM. (Village Ordinance 197-10)



## @ Your Library

### Book and Bake Sale

The Friends of the Library's semi-annual Book and Bake Sale will be held **4/19 to 4/21!** Books, CDs, DVDs, audio books, and home baked sweets at bargain prices with proceeds benefitting the Friends of the Library. The library will begin accepting donations of gently used materials for sale on 3/15. Please do not donate magazines, encyclopedias, outdated non-fiction, or materials that are in poor condition. Those interested in volunteering to help with the book sale should call the library at 201-641-0689.

### Going on a Trip? Take the Internet With You!

The library now offers free Wi-Fi hotspots for patrons to take with them on trips. These portable devices allow patrons to connect to the internet wherever they are without having to rely on phone signals or local internet providers. It's as easy as

checking out a library book. One of the many things made possible through the Friends of the Library. For more information, please visit the library.

### **Share a Universe of Stories this Summer!**

Summer is right around the corner, and with it comes the library's excellent array of summer programs for readers of all ages! We have a wide variety of reading incentives and prizes to give away, so be sure to check our calendar at [www.ridgefieldparkpubliclibrary.org](http://www.ridgefieldparkpubliclibrary.org) frequently for details. While you're there, please consider signing up for our electronic mailing list so that you'll receive our monthly newsletter highlighting the programs we offer. We promise not to clutter up your mail box with a slew of emails and we definitely never share your email address with any company, agency, or person-your privacy is very important to the library. Registration for programs begins on 6/20 for children and young adults, and 6/24 for adults.

### **Program Highlights**

A full listing of our programs appears at [www.ridgefieldparkpubliclibrary.org](http://www.ridgefieldparkpubliclibrary.org). This is also where program registrations are accepted.

**ESL Conversation Class-Mon. 4/1, 4/15, 4/22, 4/29, 5/6, 5/13, 5/20, 6/3, 6/10, 6/17, 6:00-6:30 p.m.** Talk with native speakers and other language learners about current events, travel, money, family, holidays and much more. For adults 16 years old or older. This program is provided in partnership with the Friends of Ridgefield Park Public Library.

**Homework Help for Kids!-Mon., 4/1, 4/29, 5/6, 5/13, 5/20, Wed., 4/3, 4/24, 5/1, 5/8, 5/15, 5/22, 5/29, 3:30-4:00 p.m.** Teens help elementary school kids with homework and/or reading. Registration is required, village teens and children only. Village children can register online. Space is limited.

**Chess Club Jr.-Tues., 4/2, 4/23, 4/30, 5/7, 5/14, 5/21, 4:00-4:30 p.m.** Village children grades Kindergarten-2nd grade, join us for an afternoon playing the game of kings. Registration is required. Space is limited.

**Coloring Art @ the Library-Wed., 4/3, 4/10, 4/17, 4/24, 5/1, 5/8, 5/15, 5/25, 5/29, 6/5, 6/12, 6/19, 6/26, 6:30-7:30 p.m.** Tweens, teens and adults can join in for this creative and relaxing program. Pick your favorite coloring book from a wealth of choices and color away. When you are done, we will frame your artwork and display it in the library! Afterwards, you may take your artwork home. This program is



designed for adults as well as middle school children in grades 5th and up. Refreshments will be served.

**Knights of the Reading Table-Wed. 4/3, 4/17, 5/1, 5/15, 5/29, 6/12, 6/26, 5:30-7:30 p.m.** Create a character and take part in an epic RPG adventure. Build alliances, battle monsters, and embark on an awesome quest. For 7th grade and up. Registration required.

**Kids Corner Book Club-Wed., 4/3, 4/24, 5/1, 5/8, 5/15, 5/22, 5/29, 4:00-4:45 p.m.** For kids grades 2nd - 4th grade. Together each week we read a chapter book. April/May book: *Where is Area 51?* by Paula K. Manzanero

**Movies for the Over 18 Crowd-Thurs., 4/4, 5/2, 6/6, 2:00 p.m.** All movies are on the first Thursday of the month starting at 2:00 P.M. So why not come by, enjoy a cup of coffee or tea, a donut and a free movie on us.

**Health and Wellness Challenge Kick-off-Sat., 4/6, 11:00 a.m. to 3:00 p.m.** Join your village community as we collectively lose weight to make Ridgefield Park a healthier and happier community. This is a free 12-week challenge sponsored by Bergen Community Health Services and Holy Name Hospital.

**Steps for Health-Sat. 4/13, 4/20, 4/27, 5/4, 5/11, 5/18, 6/1, 6/8, 6/15, 10:00-10:45 a.m.** Join us each Saturday for a walk in the park for good health. We will meet at Overpeck Park at 10am and walk for 1/2 hour to 45 minutes weather permitting. Call library if you are not sure. This is part of the Wellness Challenge for adults.

**Health Benefits of Meditation-Mon., 4/15, 7:00 p.m.** Blake from the Teaneck Meditation Center will discuss the health benefits to meditation, speak about his own experiences and how meditation changed his life.

**Fun with Food Storytime-Tues., 4/16, 5/21, 7:00-7:30 p.m.** Enjoy listening to a story and creating a cool food based on that book. Registration is required. Space is limited.

**Anime Daze-Thurs., 4/25, 5/23, 6/6, 3:30-5:30 p.m.** Fans of Japanese cartoons and comics join us for anime viewings,

discussions, and snacks. Doesn't matter if you're an otaku or a newbie! For 7th grade and up.

**Coder Dojo-Thurs., 4/25, 5/23, 6/27, 7:00-9:00 p.m.** 9 to 17 year olds gather to work with volunteer mentors on learning and practicing coding (programming). Space is limited. Registration for each session is required.

**Rosie the Reading Dog-Sat., 4/27, 5/18, 3:15-4:00 p.m.** Do you love to read? Would you like to practice your reading skills by reading to Rosie? Rosie is an awesome beagle, and certified therapy dog. Once you read a picture book, easy reader or a few chapters in a novel, maybe Rosie will do some tricks for you. This is a drop-in program, check out a book in the children's department for the event, Rosie loves books about dogs, especially beagles!

**Chess Club-Fri., 4/28, 5/3, 5/10, 5/17, 5/24, 5/31, 4:00-5:00 p.m.** Village children grades 3rd-6th, join us for an afternoon playing the game of kings. Registration is required. Space is limited.

**Adult Book Club-Mon. 4/29, 5/20, 6/24, 7:30-8:30 p.m.** Join us the last Monday of the month for a fun and lively discussion of our book club pick.

**Biblio-Con 2019-Sat. 5/4, 1:00-4:00 p.m.** Teens can come in dressed up as their favorite characters from books, movies, comics, or whatever else they can imagine for an afternoon of games, snacks, trivia, crafts, and a truly terrible film. Registration is required.

**Zumba with Crystal Dutan-Tues., 5/14, 7:00 p.m.** Come join us and Dance to great music, with great people, and burn a ton of calories without even realizing it.

**Summer Reading Universe of Stories Kickoff-Sat., 6/22, 12:00 noon-2:00 p.m.** Stop by and learn about the summer reading program. Those who sign up will get their summer reading kit and we will have face-painting provided by Bonne the Clown for children of all ages up to 6th grade.

**Rizzo's Wildlife Discovery-Tues., 6/25, 7:00-8:00 p.m.** Celebrate the beginning of the summer reading program with a special guest, Rizzo and his animal friends. Summer reading registration will be available before and after the program at 6:00-8:30 p.m. This program is sponsored by the Friends of Ridgefield Park Public Library.

**Kid's Movie Matinee-Wed., 6/26, Thurs., 6/27, Fri., 6/28, 10:00 a.m.** Let's start the summer with an out of this world movie experience. We will be showing family movies and supplying juice and donuts.





## BECOME A SHADE TREE BLOCK RANGER

The Shade Tree Commission is asking residents to volunteer to become a **SHADE TREE BLOCK RANGER**. All **BLOCK RANGERS** would be assigned a block or group of blocks in or near their neighborhood to keep an eye on the trees on their block, or in their neighborhood or district. A **BLOCK RANGER** would be provided information to assist them in identifying local trees; they would walk through their block district on a regular basis, and report any problems. They would look for places where new trees could be planted; and otherwise become the guardians for the trees on and near their block. If you are interested in becoming a Shade Tree Block Ranger, please contact the Shade Tree Commission at: [shadetreecomm@ridgefieldpark.org](mailto:shadetreecomm@ridgefieldpark.org) or leave your name and contact information at the Municipal Building (201-641-4950 Ext 2).

You don't need to be a Tree Expert. If you care about Ridgefield Park and our trees, you qualify. We need people who care. **We need YOU!!**

## ATTENTION ARTISTS

This June, the Ridgefield Park Arts Association will be launching an art exhibit featuring art created by village residents. It will be on an ongoing, rotating exhibit where art pieces selected by members of the Association are displayed in the Municipal Building and Civic Center for three months. If you are a painter, illustrator, photographer, graphic designer or sculptor who lives in Ridgefield Park and are interested in submitting your work for consideration, please email your name, address and phone number to [RidgefieldParkArts@gmail.com](mailto:RidgefieldParkArts@gmail.com) for details.

**KEEP RIDGEFIELD PARK  
BEAUTIFUL – DON'T LITTER**

## SAVE THE DATE

On Saturday, June 15th, the Ridgefield Park Arts Association will be holding Summer Arts Fest, our first outdoor festival featuring village musicians, restaurants, singers, dancers and artists. The event will be held on Grove Street near the intersection off Main Street from 6:00-9:00 pm. Mark your calendars so you can kick-off summer at this fun and exciting celebration of the arts in Ridgefield Park!

## EARTH DAY CELEBRATION SET FOR MAY 11TH

This year's Village of Ridgefield Park's Earth Day celebration is set for Saturday May 11th from 10:00 a.m. to 5:00 p.m. at Riverfront Park, located behind The Department of Public Works building at 24 Industrial Avenue.

Hosted by the Ridgefield Park Environmental Commission and Green Team, the day starts off with Shade Tree Commission's Arbor Day Ceremony at 9:00 a.m. followed by six shows that include **Mad Science — Interactive Show — 10:30 a.m.;** **Endangered NJ - 12 Noon;** **The Wild Life Animal Show from NJ Batman - 1:00 p.m.;** **Dirt on Garbage Booth - Hands-on Fun Interactive Booths-2:00 p.m. to 4:00 p.m.;** **Tenaflly Nature Center — Remarkable Raptors Show - 3:00 p.m.** One class from each Ridgefield Park elementary school with the most students attending these activities will win an ice cream party.

The fun continues with boat rides from the Hackensack Riverkeeper along the Hackensack River, all-day music provided by Mark Rust, face painting and a Green Fair featuring local artisans, fauna, flowers environmental exhibits and demonstrations throughout the day.

Commissioner John Anlian, who oversees the activities of the Ridgefield Park Environmental Commission and Green Team said, "We are excited about this year's celebration and the activities that we are offering the residents of Ridgefield Park. It's going to make for a fun and educational day for all."

"At the same time we hope to raise awareness about environmental issues that are affecting our community and encourage all residents to enjoy and take advantage of the environmental treasures that are all available here in Ridgefield Park," he

said. "Over the last couple of years our Environmental Commission and Green Team have tackled some important issues and have introduced new programs and ideas that have and will continue to transform Ridgefield Park into a more sustainable community. This year's Earth Day Celebration is really all about bringing the community together to celebrate and enjoy the environment where we live."

There is no cost to attend both events. Those interested in attending this year's Earth Day celebration can send the Ridgefield Park Environmental Commission an email at [envcomm@ridgefieldpark.org](mailto:envcomm@ridgefieldpark.org). The Earth Day celebration will take place rain or shine.



## GARDENING FOR WILDLIFE

Monarch Butterflies are threatened by increased pesticide use and the disappearance of their habitat here and in Mexico where they spend the winter. Their populations have decreased by 80 percent over the last two decades! But you can help them by planting flowers in your garden that they and their caterpillars need to survive! Monarch Butterflies only lay their eggs on **Common Milkweed, Swamp Milkweed, and Butterfly Weed**. By planting these plants in your garden you will be providing the food that Monarch caterpillars need to grow and mature into butterflies!

**Adult Monarch Butterflies** also need nectar producing flowers to feed on during their epic migration from Northern Canada to Mexico. You can help them by planting **Zinnias!** Zinnias are super easy to grow and their many-colored flowers will look beautiful in your garden. They are one of the Monarch Butterfly's favorite food sources for nectar and attract hummingbirds as well! So let's all help the Monarch Butterflies that migrate through Ridgefield Park by planting the flowers they need to survive! And remember **DO NOT** use any pesticides in your yard or garden as this will kill any Monarch Butterflies you attract!

You might also want to attract **hummingbirds** to your backyard! One of the easiest ways to do this is to hang up and maintain a hummingbird feeder! The best hummingbird feeders are available from a company named Aspects at <http://www.aspectsinc.com> or from Wild Birds Unlimited at <https://www.wbu.com>. You can easily mix up the sugar water they love by adding one part regular table sugar to 4 parts of water! Boil this mixture then let it cool and fill your feeders with it. Be sure to change this mixture every week or so. Hang your feeder out in a shady spot in your garden in early spring (April) when hummingbirds start to arrive from the south. You might be lucky to encourage them to stay in your neighborhood for the summer if there are enough flowers and insects to support them when they nest and raise a family! Be sure to maintain your feeder once you attract them so they have a constant source of food while they are with you! And, again, **NO pesticides** as these harm hummingbirds as well!

## STYROFOAM

Styrofoam actually has two forms. The type used for food containers is XPS — Extruded Polystyrene. The type used for packaging/shipping is EPS — Expanded Polystyrene. This difference is important because XPS is used for food. Once food contacts XPS it cannot be recycled.

To learn about this, village residents attended a special presentation at the library on January 27th. The presentation was given by the Bergen Hub of Green Teams and Environmental Commissions. Ridgefield Park is a member.

The capacity audience learned about chemicals which leach out of XPS when used for fatty or acidic food. They also learned that heating, such as in a microwave, leaches out even more chemicals.

EPS is very recyclable but not in our household recycling pickup. In order to be able to offer EPS recycling to residents the village has applied for a grant from the Bergen County Utility Authority. If the village is awarded the grant a special container for EPS recycling will be purchased. The container will be centrally located in the village. More about this in the next newsletter. For more information now contact the Green Team — [GreenTeam@RidgefieldPark.org](mailto:GreenTeam@RidgefieldPark.org)

The Bergen Hub was awarded a grant by Sustainable New Jersey to address the problems caused by XPS & EPS. The 18

month project includes 4 elements. First to educate about the effects and dangers of EPS & XPS. Second is to recognize restaurants, grocery stores and other business which have voluntarily stopped using XPS. Third is to create a way for Bergen County residents to be able to recycle their EPS. Ridgefield Park will be among the first municipalities in the county to have such a program. Last; the Hub will be helping municipalities who want to ban the use of XPS for food container use. Leonia has taken this step and other communities are contemplating banning XPS.



## BOARD OF RECREATION

Just a reminder to everyone, the Board of Recreation is made up entirely of volunteers who generously give their time to run various programs and activities for the residents of the Village. It operates on a small budget provided by the Village and assists hundreds of residents in various activities. You may contact the Board of Recreation by either email at [boardofrec@ridgefieldpark.org](mailto:boardofrec@ridgefieldpark.org) or calling voicemail at (201) 641-4950 ext. 610. Information on all Board of Recreation activities is available at [www.ridgefieldpark.org](http://www.ridgefieldpark.org). Please remember volunteers run these programs and they will get back to you as soon as possible.

Not all activities are run by the Board of Recreation and the Board will not be able to answer your questions on these activities. To make sure you are calling the right number for assistance, please remember to check our website to see what activities the Board sponsors. Not all sporting activities are run by the Board of Recreation. Baseball, football, wrestling, softball and soccer, for instance, are all run by private organizations and unfortunately, we are unable to answer any questions concerning these activities. The summer concert series is also not run by the Board.

Please also be on the look-out for registration forms and news from the Board of Recreation on the school district website. A link has been created for community fly-

ers. All forms are distributed electronically now so you can print it from there or on the Village website.

Upcoming Board of Recreation activities are as follows:

### Acting and Improvisation Grades K-12

Learn to Act! Have Fun! Be creative! Build confidence!

Classes now forming for the Summer Session for all grades. Taught by Rachel Maddock, MA Educational Theatre. On-going Registration. Registration forms available at the Clerk's office or on-line. For info: Voicemail (201) 641-4950 ext. 610, Email: [boardofrec@ridgefieldpark.org](mailto:boardofrec@ridgefieldpark.org) or visit [www.ridgefieldpark.org](http://www.ridgefieldpark.org)

Students will be introduced to the basic elements of acting through theatre games and improvisation. They will develop an understanding of building an acting ensemble through cooperative group work and will learn spontaneity, physical and vocal expression, pantomime, character exploration and basic playwriting. — Older students will also study advanced acting techniques such as sensory work, monologue work, and basic scene study. — Acting and Improvisation classes are a great way for students to channel their energy and interact in a fun and creative way. — Acting and Improvisation builds confidence and life-long communication skills that can be applied to any field. Studies have shown that students who participate in the Arts have a greater chance of improving their academic performance.

### Adult Women's Slow-Pitch Softball

Completed registration packets are due by March 31. The season begins in May and runs through July. All women 18 years of age and older (including out-of-towners) are eligible to play in this league. Late registrations should be immediately dropped off at the Village Clerk's Office. Registration fee is \$90.00 per player (with shirt).

### Easter Egg Hunt

The Easter Egg Hunt is scheduled for **Saturday, April 20, 2019, at 10:00 a.m. SHARP** at Veteran's Park. Line up at 9:45 a.m. on the Preston Street side of the high school. Prizes will be awarded and the Easter Bunny will be on hand to greet the children. All children up to Grade 6 are invited to participate. The Easter Egg Hunt is a rain or shine (or snow!) event. Don't forget a basket to carry your eggs! **Please remember this is a dog-free park and dogs are not permitted to enter the park.**

## Tennis

The Board of Recreation sponsors a tennis program run by Barry Rubach. Registration forms are distributed in the schools. The program is available for RP residents/students or those attending school in RP. Barry Rubach runs this program, which is taught by All Pro Tennis Staff.

**Session 1 April 6, 13, 20, 27, May 4**

**Session 2 May 18, 25, June 1, 8, 15**

2:00 - 3:00 pm 6 - 7 years old

3:00 - 4:00 pm 8 - 10 years old

4:00 - 5:00 pm 11 years old and up

For more information, call Barry Rubach at 201-568-3946 or go to [www.allprotennis.net](http://www.allprotennis.net) or email: [barrys10s@gmail.com](mailto:barrys10s@gmail.com). Sessions run from the spring through fall.

## T2S Basketball

The Board sponsors a basketball specific performance enhancement training program to students in grades 2-12 run by T2S Basketball Academy. There is ongoing registration at [www.t2sba.com](http://www.t2sba.com) for registration online using the registration tab on the website. For further information, interested people can email [t2sbasketballacademy@gmail.com](mailto:t2sbasketballacademy@gmail.com) or on Facebook: @t2sbasketballacademy or follow T2S on Instagram for updates on scheduled training sessions, packages and locations.

All Board of Recreation meetings are open to the public. They are held on the third Thursday of the month at 7:00 p.m. at the Municipal Building on the third floor in the Dare Room. Anyone with any questions, comments or suggestions is more than welcome to attend any meeting. Anyone needing to speak to the Board of Recreation may call (201) 641-4950 ext. 610 and leave a message on the voice mail. If you wish to send a letter, please address it to the Board of Recreation at 234 Main Street, Ridgefield Park. For any information concerning Board of Recreation activities or to get a registration form, please go to [www.ridgefieldpark.org](http://www.ridgefieldpark.org). If you prefer to send an email, the email address for the Board of Recreation is [boardofrec@ridgefieldpark.org](mailto:boardofrec@ridgefieldpark.org).

The Board of Recreation is always welcome to hear your comments.

**Pedestrians in the crosswalk have the right of way - STOP! Stop for pedestrians waiting to cross at corners/intersections**

## MARK YOUR CALENDAR

FREE!

RIDGEFIELD PARK  
DOG & CAT OWNERS  
RABIES CLINIC

Sponsored by the  
RIDGEFIELD PARK HEALTH  
DEPT.

APRIL 25, 2019 7:00 PM to 9:00 PM

DEPT OF PUBLIC WORKS  
BUILDING (DPW)  
24 INDUSTRIAL AVE.  
RIDGEFIELD PARK

All dogs and cats that were inoculated in 2016 must be inoculated this year.

Dogs must be secured to a leash and be accompanied by a person over age 12. Cats must be brought in a carrier.

Licenses for dogs and cats may be renewed at this site.

\$10.00-Neutered

\$15.00 - Not Neutered

LATE FEE of \$ 10.00 will be charged for animals licensed after April 30, 2019

JOHN H. ANLIAN  
Commissioner

## COMMUNITY GARDEN NEWS

As we start season 3, our gardeners are busy planning their "gardens" and seeing fellow gardeners again.

We have some plots at both our Fellowship and McGowan locations available to those who are interested in gardening with us. No experience needed. We have gardeners from novice to master gardener level. We have renters and home owners. Everyone is welcome to join. Our space is limited so if you are interested, please apply as soon as possible. Plots are assigned on a first come basis. We have had several requests already!

Both garden locations have individual, interior plots surrounded by a row which have trellis backs. The plots located on the inside are to be planted, maintained and harvested only by the gardener who is assigned to it. The plots facing out with the trellis backs are maintained by the gardeners, but are open to the public to pick. They

may contain vegetables, herbs and even some flowers. Please be mindful that crop is limited, so we ask you to be respectful of the next person who might want a cucumber and a tomato to add to their salad that night. Please take only what you might need to add something special to your evening meal. Our intent is to share our public harvest with as many villagers as we can. Periodically, on concert nights, we will have a basket full of newly harvested veggies and herbs at our McGowan location to share with concert goers. If you would like more info or application, see below.

Read more about us on the village website at [www.ridgefieldpark.org/community-garden](http://www.ridgefieldpark.org/community-garden).

For an application: [www.ridgefieldpark.org/community-garden/files/community-garden-application](http://www.ridgefieldpark.org/community-garden/files/community-garden-application)

For more information: [communitygarden@ridgefieldpark.org](mailto:communitygarden@ridgefieldpark.org), or call Janet at 201-362-4420.

## PADDLING ON THE HACKENSACK

The village will be installing canoe & kayak racks at River Front Park (behind the DPW) for residents to store canoes and kayaks used on the Hackensack River.

The racks will be close to the existing canoe & kayak dock. It will be free to village residents but there will be a couple restrictions.

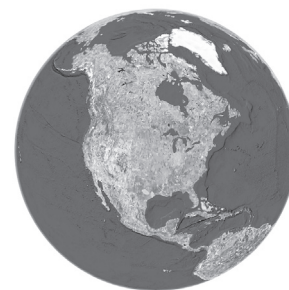
First you must contact the DPW to be given a space on the rack. 201-440-4860

You may chain and lock your canoe or kayak.

Canoes and kayaks must be off the racks by December 1st.

Mark Olson - Green Team and Environmental Commission

This is an Environmental Commission idea that the DPW will run.



## VOLUNTEER TO KEEP THE VILLAGE GREEN

Join the celebration ... the 40th annual Village Arbor Day program on May 11,



2019, at Riverside Park, adjacent to the Department of Public Works. The program time will be posted on the Village website and the digital bulletin board and will immediately precede the Earth Day activities.

Arbor Day is a good time of the year to review the importance of trees in our lives. According to the Arbor Day Foundation ‘... trees provide what we must have in order to live. We need trees to slow climate change, to filter and clean our water, to help remove pollutants from the air.’ The Foundation urges planting trees to offset the “net loss of 10 billion trees a year” globally; “in America, forest fires alone clear, on average, 4 million to 5 million acres a year.’

The Village has always recognized the importance of its trees with town officials, residents, and the DPW combining efforts to plant trees as well as to care for existing trees. Currently the Shade Tree Commission is selecting sites for spring planting. There is still time to contact the STC to request a tree for 2019; call 201-641-4950 extension 640 or email [shadetreecomm@ridgefieldpark.org](mailto:shadetreecomm@ridgefieldpark.org) with your name, address and phone number or email. Any Village tree that was removed by STC will be replaced.

The STC, which was established by the Village in 1979, to plant and care for the “shade trees and shrubbery upon and in the streets, highways, public places, parks and parkways” encourages residents to join. STC meetings are the second and fourth Mondays each month at 7:30 pm in the 3rd floor conference room in Town Hall. If you want to help but can’t commit to regular meetings we invite you to become a SHADE TREE BLOCK RANGER.

All BLOCK RANGERS would be assigned a block or blocks in or near their neighborhood to keep an eye on the trees on their block, neighborhood or district. BLOCK RANGERS would be provided information to assist them in identifying local trees; they would walk through their block district on a regular basis, and report any problems. They would look for places where new trees could be planted and otherwise become the guardians for the trees on and near their block. If you are interested in becoming a SHADE TREE BLOCK RANGER, contact the STC at 201-641-4950 ext. 640 or [shadetreecomm@ridgefieldpark.org](mailto:shadetreecomm@ridgefieldpark.org) leaving your contact information.

## SIDEWALKS

The STC has the Sidewalk Safety Program for sidewalks that need lifting or replacing due to Village shade tree roots. Anyone interested in the program should obtain forms at Town Hall and return the completed form to the STC to initiate inspection.

Currently there is a waiting list, but submit your application now because work is done according to the date the application is received.

All reimbursable work **MUST BE PREAPPROVED BY A STC MEMBER** and done by a **STC APPROVED CONTRACTOR**. Property owners will not be reimbursed for work done without pre-approval by STC or by a contractor who is not STC approved. Property owners are required to pay the contractor and then submit the invoice to the STC for reimbursement.

Save a life and learn to swim this summer at the  
John B. Davis Municipal pool  
Located at Hobart Street and Overpeck Avenue in Ridgefield Park

### OPEN HOUSE

Good for ONE FREE ADMISSION VISIT to  
The John B. Davis Pool  
Valid Sunday, June 2 or Saturday, June 8 ONLY!  
12 noon – 3pm

Proof Of Residency is required for admission. Swim lessons and a five week swim team are available to pool members. Swim lessons are also available to non-members, as well as (14 year old and older) student memberships with parental permission, see pool manager for details.

Also this summer — extended hours June 24–Aug 2 M-F till 8:30 pm!

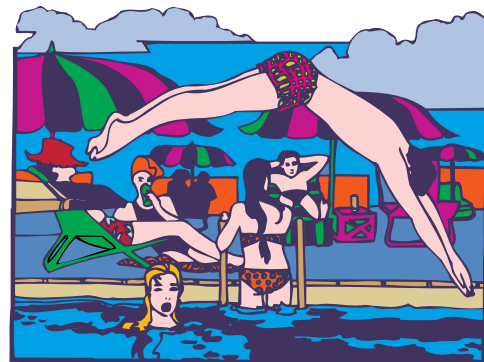
Persons under 14 years old **MUST** be accompanied by an adult for admission on The Open House dates. Passes cannot be reproduced or duplicated.

Please go to [www.ridgefieldpark.org](http://www.ridgefieldpark.org) for applications and further information.

## REMINDERS

According to Village Ordinance 3-79 no one can fasten any sign... garage sale, lost pet, etc...to any Village shade tree.

Enjoy our Village trees!



### JOHN B. DAVIS POOL

Although the thermometer may be dipping into freezing temperatures, it’s time to start thinking about fun in the sun at the John B. Davis Municipal pool of Ridgefield Park. This facility is located at the foot of Hobart Street and offers everything you would want in a community pool. In addition to our three pools, we offer swim lessons and a competitive swim team for the children and a lap lane for the adults — there is something for everyone. The pool is open weekends from May 25 through June 21 and daily from June 22 through September 2. Membership is limited to Ridgefield Park, Little Ferry and Bogota residents, as well as employees and volunteers from these towns. In addition, members can sponsor Bergen County residents for full membership.

Anyone interested in information regarding membership fees or rules and regulations, please contact us at 201-641-4950 x100, or visit us at [www.ridgefieldpark.org/poolcommish.html](http://www.ridgefieldpark.org/poolcommish.html)

Don’t miss out on the summer fun! You can also visit the pool for one of our Open Houses.

Please check our website later in the spring to check for dates.



# DEPARTMENT OF PUBLIC WORKS

## *Imagine life without a Department of Public Works (DPW)...*

Who would pick up your garbage and trash? Or run the recycling center? Who would maintain the parks and fields that your children use? Who would take care of all the public buildings like the Municipal Building/Police Station, Ambulance & Rescue Squad buildings, and Civic Center? What would happen when it snows? And how about clean-up after a big storm that knocks down trees -who would take care of that? Let's not forget about the sanitation/sewer systems!

DPW workers are the unsung heroes of many small towns. Most citizens never give a thought to the work that needs to be done to keep a town running. Most towns like Ridgefield Park have a small staff of hard working employees who often times work on holidays in an effort to keep things running smoothly. Let's work together to keep Ridgefield Park a community we are all proud of. If you have a concern, please call the office at 201-440-4860.



**Recycling Center hours are Monday through Saturday, 9am-12 noon.**

**Please do not arrive after 12.**

**Even if the gates are open-it may not be safe for you to enter.**



The following items are NOT picked up at the curb-You may bring these items to the Recycling Center:

- Fluorescent light bulbs
- Car batteries (regular batteries go in household garbage)
- Used cooking oil
- Antifreeze
- Motor oil and oil filters
- Propane Tanks
- Paint Cans
- Helium Tanks

## **YARD WASTE pick up resumes on March 4<sup>th</sup>**

Yard waste should be placed at the curb the night before collection.

- Mt. Vernon & South is picked up on Mondays
- North of Mt. Vernon is picked up on Tuesdays

Yard waste consists of weeds, grass clippings, branches twigs and clippings from bushes and flowers. Branches should be cut into 4 foot lengths and tied into bundles. NO DIRT OR ROCKS! It must be placed in a dump able container (35 lb. limit) or a brown bag. Please DO NOT dump yard waste in the street.



It is a violation of Village of Ridgefield Park ordinance to sweep, cast or throw anything into the gutter.

Yard Waste can be placed in a trash can or PAPER bags. Do NOT put Yard Waste in Plastic Bags.

## **DON'T FORGET...**



**You must call in** the following items for "**White Goods**" collection by Tuesday for Wednesday collection.

- Tires
- Bicycle
- Lawnmowers
- Snow Blowers
- BBQ Grills
- Treadmills
- Air Conditioners
- TVs
- Computers
- Printers
- Stoves
- Refrigerators
- Dishwashers
- Hot Water Heaters
- Washers/Dryers

Your address will be added to a list. Place your items at the curb on Tuesday night and a special truck will pick-up on Wednesday morning starting at 6am. Call 201-440-4860