

village newsletter

www.ridgefieldpark.org

VOL 38 NO7

Ridgefield Park, N.J.

SEPT, 2023

LOCAL POSTAL
CUSTOMER

PRST STD
ECRWSS
U.S. POSTAGE
PAID
EDDM Retail

SAY GOOD-BYE TO SUMMER & HELLO TO FALL

We can't wait until the warm weather arrives; and then it is already getting colder. But, that is just the cycle of the seasons. Autumn is here. But, we should take a moment to look back on a great Summer. Appreciate what we have in New Jersey. And now, let's look forward to what is ahead of us. Many fun events are on the horizon - as is more specifically set forth elsewhere in this Newsletter. Bergen Busking Festival -Sept. 30; The Hackensack River Races - Sept 30; The Street Fair & Jazz Festival- Oct 7th; The Health Fair -Oct 14th; Halloween Parade - Oct. 21st (early this year); Autumn Market & Festival on Nov. 4th; and more... Schools are back open. So, drive safely and watch out for children and other pedestrians. Enjoy the autumn foliage, the cooler breezes, and the joy of being alive.

William Gerken, Commissioner
Adam MacNeill, Commissioner
Mark Olson, Commissioner
Wanda Portorreal, Commissioner
John Anlian, Mayor



BOARD OF RECREATION

The RP Board of Recreation is here to help offer programs to our Village residents. The list below represents what is in the mix this season, but we are always thinking about what else may make RP an even better place to live and we are always willing to listen to our Village residents if they have any ideas they would like to share. Check our page on the Village website at www.ridgefieldpark.org/board-recreation for all registration forms and current information. All Board of Recreation activities and news are also posted on the Village social media accounts. Follow us on Social Media: Instagram Facebook Linktree @ridgefieldparknj. Have a question? Send us an email (fastest method) and we'll respond as soon as possible. Email: boardofrec@ridgefieldpark.org. Our voice mail is (201) 641-4950 ext. 610. Please remember we are VOLUNTEERS and will get back to you as soon as possible.

Ridgefield Park Run Club - For those age 14 and up. Meet at the Nature Preserve entrance near E. Grand Avenue/RPHS every Sunday @ 12:00 p.m. This is open to runners of any level - including beginners. There is no cost to participate but runners are asked to sign a waiver. Distance: 5 miles at a beginner pace. More info? Email us and we'll fill in all the blanks. For added camaraderie and support, we've got a private online group where runners can share photos, stats, and stay connected. With his expertise in exercise science and nutrition, Anthony Lopez serves as an exceptional coach and leader guiding newcomers and seasoned runners alike to reach new heights of speed and performance. All are welcome to be part of this inspiring community!

Archery Clinic - Open to those 6 years old and up. The fall session will run from September 16, 2023 - November 18, 2023 - No archery on October 21 because everyone will be at Rag-A-Muffin Parade @ 11:00 a.m. Clinic will be held on Saturday mornings in three sessions: 9:00 - 9:45 10:00 - 10:45 11:00 - 11:45.

Registration fee is \$25.00 (with shirt), \$15 if you registered in the past. Bring your registration form (download at <https://www.ridgefieldpark.org/board-recreation> and fee to the first session. Held behind the DPW at 24 Industrial Avenue.

Rag-A-Muffin Parade - Dress 'em up and march them down to the Fellowship Park tennis courts and we will celebrate the spooky season with a costume contest for all as well as food carts, DJ and some new surprise entertainment!! We've been listening to comments and made some changes. We're trying out some new divisions this year as follows: 6th division will be 8 yrs to 6th grade, a new division will be 7th through 12th grades and an adult only division. Costumes must all be G-rated and family appropriate to participate in the parade. This year the parade is moved one week earlier as we try to avoid conflicts. The parade is scheduled for Saturday, October 21, 2023, at 11:00 a.m. sharp. Registration is 10:30 a.m. Rain date Saturday, October 28 @ 11:00 a.m. Prizes to be awarded and goodies for every child! Info and registration form, go to: <https://www.ridgefieldpark.org/board-recreation>. We want to remind everyone that not all pets enjoy the costumes and parades as much as we do, so please be careful if you feel that you must bring your furry friends with you.

T2S Basketball - The skills program is run by Larry Umana and Nate Lopez. For further information, interested people can email t2sbasketballacademy@gmail.com on Facebook: @t2sbasketballacademy.

Basketball - Check <https://www.ridgefieldpark.org/board-recreation> for up-to-date information and registration forms for this activity. Registration Dates and Locations: Friday, Sept. 22, 2023, 6:00 p.m. - 8:00 p.m. and Saturday, Sept. 23, 2023, 10:00 a.m. - 12:00 p.m. at the Civic Center (upstairs) 159 Park Street. Clinic is available for students in grade 2 and basketball teams are available for grades 3-8. Fee: \$55.00 per child; \$45.00 for each additional child.

Fee for any registration submitted after Sept. 23 is \$75.00 each. Registration closes on October 25. Mail or drop off late registrations to the Clerk's Office at 234 Main Street.

Evaluations will be at Lincoln School as follows: Mon, Oct. 30 - 3rd/4th & 5th/6th Boys at 6:30 p.m.; Wed., Nov. 1 - All Girls at 6:30 p.m.- 7:15 P.M. and Wed., Nov. 1 - 7th/8th Boys 7:15 p.m. - 8:30 p.m.

Big Mike's 3 v 3 Co-Ed Basketball League - Fall 2023 Season - This is an adult activity named in honor of Mike O'Neill who was a pillar of this community and spent many years on the sidelines and fields of RP giving of his time to coach his children as well as many others.

Eligibility: Men and Women - must be 21 years or older to participate.

Roster Size: 5-7 Players

We encourage each team to have at least one woman participating (if at all possible). We'd like Ridgefield Park and Little Ferry residents as first options but we are okay with one to three people who live outside of those towns participating.

Game Night: Mondays Location: Lincoln School Gym Game Times: 6:30 P.M. / approximately 7:15 P.M. / approximately 8:00 P.M. and approximately 8:45pm
Regular Season Dates: September 11, 18, 25, October 2, 10, 16 and 23.

Playoff Dates: November 2 and 3 (tentatively). Cost: \$350 Per Team. Check made payable to RP Board of Recreation and drop off or mail your packet to the Clerk's Office. Flyer:

<https://www.ridgefieldpark.org/board-recreation>.

Saturday Night Hoops - Late fall through late-winter the high school boys and girls, 9th - 12th grade, can join the Rec basketball league for Saturday night games at the high school. Tryout date and times: MONDAY, NOVEMBER 13, 2023 @ 7:00 P.M. - LINCOLN SCHOOL. Check our website or social media for updated info and registration forms. Season runs from approximately December 9, 2023, - April 6, 2024.

Tree Lighting - If you have not brought your child to one of these, you're missing out on the holiday fun. It may be cold as heck, but it does not stop us from celebrating the season. There are holiday songs as well as a raffle for a special prize and a jolly old man in a red suit will be helping to light the village Christmas tree! It all happens on Sunday, December 3, 2023, at 5:30 p.m. at the Municipal Building. Please check the website and municipal message board for updated information. There's sure to be some new fun things for all!!

Holiday Wish Tree - It is all about giving not receiving and we sponsor this program so that those who are fortunate enough to give can give to those who need it. By Thanksgiving weekend, you can select your

ornament at <https://www.signupgenius.com/go/10C0D45A5AC23A0F8C07-20231>. The tree is located outside the Clerk's office, and you can also stop there for an ornament. You need to return your gift by December 13, 2023. Your gift will then be delivered to a very appreciative child. Thanks again for your assistance! To see the flyer, go to the website or social media.

Holiday Display Contest - We review the holiday display of those who choose to participate and award prizes to the best of the best! This year judging will be done beginning at dusk on December 20, 21 & 22. Just a note for participants, photos are kept of past winners. Decorations must be changed significantly from the previous year in order to receive a prize the following year. The registration form is available on the website or social media.

After the contest, check for winners on the website, social media, and the community message board. You must register by December 19 to be included in the contest. Email, drop off or mail the forms to the Board of Recreation at 234 Main Street, Ridgefield Park. **YOU MUST REGISTER IF YOU ARE RESIDENTIAL OR BUSINESS.**

Adult and Family Events - keep checking our page at

<https://www.ridgefieldpark.org/board-recreation> for updated info on available group tickets that may come up throughout the year.

Ping Pong - This is a new activity for the Board of Rec. So far, adults have participated. Watch for the next sign-up. If there are enough children that want to participate, we can add a children's session again.

DON'T FORGET: All Board of Recreation meetings are open to the public. They are held on the third Thursday of the month at 7:00 p.m. at the Civic Center at 159 Park Street. Anyone with any questions, comments or suggestions is more than welcome to attend any meeting.



FROM THE VILLAGE CLERK'S OFFICE.....

COMMISSIONERS MEETINGS

The Board of Commissioners of the Village of Ridgefield Park, pursuant to the Open Public Meetings Act NJSA 10:4-6 et seq., has established their Caucus and Regular meeting dates for the year 2023. The Caucus Meetings will be held on the Thursday preceding each Regular Meeting, unless otherwise indicated, at 7:00 PM at the Municipal Building, 234 Main Street, Third Floor. Regular meetings will be held on the second and fourth Tuesday of each month, unless otherwise indicated, at 7:30 PM at the Municipal Building, 234 Main Street, Third floor

Remaining 2023 Meetings:

2023 Caucus Meeting Dates:

Sept. 7 and 21

Oct. 5 and 19

Nov. 9 and 28

Dec. 7 and 21

2023 Regular Meeting Dates:

Sept. 12 and 26

Oct. 10 and 24

Nov. 9 and 28

Dec. 12 and 26

RAFFLES

All Clubs, Organizations, PTAs or Individuals that conduct 50/50's, tricky trays, basket raffles, bingo, casino nights, or any other type of raffle must register with the State of New Jersey Legalized Games of Chance Commission to obtain an Identification Number. Only after obtaining this ID number can you apply for a raffle license.

The State will not issue a raffle license unless you are a registered organization. To register: www.njconsumeraffairs.gov/lgcc

RAFFLE LICENSE APPLICATIONS MUST BE SUBMITTED FOR EACH RAFFLE YOU CONDUCT.

Raffle license applications are available in the Village Clerk's office. Applications must be completed six (6) weeks prior to your raffle.

THE LEGALIZED GAMES OF CHANCE CONTROL COMMISSION IS ACTIVELY ATTENDING RAFFLE EVENTS TO ENSURE COMPLIANCE - FAILURE TO COMPLY CAN RESULT IN YOUR EVENT BEING SHUT DOWN.

PROPERTY TAX PAYMENTS

Property Tax Payments can be made online using a debit/credit card, or your bank account information. There will be convenience fees charged for this service. The convenience fee is charged by the

the provider and not the Village. To make a payment, visit the Village website: www.ridgefieldpark.org and click on the link: "Make online property tax payments"

When making tax payments, by mail or in person, please submit your entire tax bill for receipting purposes. If making payments by mail, please include a self-addressed stamped envelope if you request a receipt.

****THERE IS A DROP BOX LOCATED IN THE POLICE DEPARTMENT LOBBY FOR TAX PAYMENTS. PLEASE - NO CASH PAYMENTS.**

NOTARY SERVICES

If you need a document notarized, the Village offers this service, free of charge, to residents of Ridgefield Park. Just a reminder, a notary only witnesses signatures.

DPW RECYCLING CENTER

The recycling center will be closed on 9/27 for a grand opening of the new EPS (packaging Styrofoam) densifier. Ribbon cutting is at 11:00am and is open to the public. Come and show your support for EPS and other recycling initiatives.

ANNUAL WANDA CANOE CLUB RACE - SEPTEMBER 30TH.

The 7th Annual HACK Race is scheduled for Saturday, September 30th 2023. This 9-mile and 5KM race is one of the largest paddling events in the northeast with approximately 90 paddlers attending yearly. The race is scheduled to start in Ridgefield Park at approximately 12PM with turnarounds by the USS Ling and the Historic New Bridge. Spectators are welcome in Ridgefield Park and at bridges along the course. The FDU walking bridge is a favorite for up close views of racers in action!

WORD ON THE STREET FRIDAY, SEPTEMBER 8, 7PM GROVE STREET STAGE

If you've ever had an urge to step in front of an audience and tell a story, WORD ON THE STREET is an event you won't want to miss. Volunteer story tellers, poets, authors, and folks just like you--will be stepping up to the mic. The night's theme will be TURNING POINTS.

Prefer to just enjoy the show? You don't have to step up to join in the fun. Everyone is welcome to attend...enjoy the musical talents of the fabulous Joe Kenney...cheer on our local luminaries and writers...and support The Ridgefield Park Arts Association and The Friends Of The Library.

For more information or to register for a spot, contact bob.s@theb2bgroup.com or call 212.952.1018. Walk-up registrations are welcome -IF TIME PERMITS.

COMMUNITY GARDEN NEWS

Have you visited Fellowship or McGowan Community Gardens lately? They are in full summer glory! Each garden has beautiful flowers and vegetables. There are individual plots that our gardeners plant and tend, and there are beds on the outside that are also maintained for the public to sample some tasty vegetables and herbs.

How do our gardeners decide what to plant? Most folks plant the favorites - home grown tomatoes, peppers, basil and all kinds of vegetables and gorgeous flowers. Some may get inspired by something interesting that another gardener has planted or they saw in a nursery. We plant milkweed specifically to attract monarch butterflies, and we plant various flowers to attract pollinators. We were mindful of creating safe habitat for insects and critters when we adopted "No Mow May" this year.

We are now starting to plant our Fall vegetables - the ones that thrive in cool weather. Look for peas, lettuces and root vegetables in September and October.

All our gardeners will tell you that they truly feel that they are a community and enjoy the friendships they've made in the gardens. Please stop by and visit and consider joining!

Growing Fresh Produce for the Food Pantry

Our Food Pantry garden plot has been incredibly successful! It's practically a small farm! With a dedicated group of volunteer gardeners and the help of the Key Club high school teens, over 150lbs of fresh produce have already been harvested and donated with much more ripening on the vine. This year's produce has included fresh tomatoes, cucumbers, zucchini, garlic, cabbages, radishes and a variety of herbs. The plot is visible at St. Francis Church from Euclid Ave. between Mt. Vernon and Park. The Food Pantry serves over 450 local men, women and children each month and is run by a group of volunteers.

RIDGEFIELD PARK ENVIRONMENTAL COMMISSION CHAIR

Stephen Quinn was honored in July by the New Jersey Governor's Office of Volunteerism as its 2023 Medalist for Environmental Stewardship.



RP DPW

Recycling Center Closed on Wednesday, September 27th for EPS Densifier Ribbon Cutting

Recently, the Village of Ridgefield Park purchased an EPS Densifier, which will be located at the DPW, 24 Industrial Avenue Recycling Center.

On Wednesday, September 27th at 11:00 am Sustainable Ridgefield Park is hosting the Ribbon Cutting. The County Executive, members of the County Commissioners, Mayors from Bergen County and other Elected Officials are expected at the event with some DPWs bringing EPS waste for a live demonstration. The Public is invited.

The Densifier was purchased from RecycleTech Corp. located in Elmwood Park, New Jersey

<https://www.recycletechno.com/>

The Densifier takes EPS waste aka as packaging Styrofoam and densifies it down by heating it to a fraction of its original volume. The densified EPS is used in the production of other plastic goods preventing waste from entering landfills.

As a result of years of work and research conducted by the Sustainable Bergen County Hub - a group of town Green Teams and Environmental Commissions, which Sustainable Ridgefield Park is an active member- and a generous grant from Bergen County, the village was able to complete the purchase.

DPW employees and representatives from other communities will be trained to use the densifier.

Those neighboring towns will bring their collected EPS to Ridgefield Park after our recycling center closes at noon to process it. There will also be EPS collection drives on some Sundays where residents from other towns, which do not have EPS recycling programs, can bring their EPS to Ridgefield Park so it can be recycled.

The densified products will be sold and proceeds from the sale will go towards future machine maintenance and repairs.

If you have any questions about the new densifier, please call the DPW at 201-440-4860. In the meantime, please start collecting EPS Foam Sheets, EPS Foam Packaging and EPS Foam Coolers and bring the material down to the DPW recycle center. Remove packing tape, labels and staples. Styrofoam materials that are not acceptable are: White Cups, Food Service Trays, Packaging Peanuts, Colored Plates and Foam Egg Cartons.





FALL MARKET & FESTIVAL IN THE PARK

The Ridgefield Park Arts Association will sponsor the Fall Market & Festival in the Park (formerly known as Holiday Market in the Park). This event will take place on Saturday, Nov. 4th from 11 am to 4 pm at Fellowship Park located on Bergen Ave and Hobart Street. Some may know it as the Tennis Court Park. Enjoy spending a day outdoors, shopping, eating, listening to live music, and taking a chance on winning a tricky tray item or even the 50/50!

We welcome independent consultants from direct sales companies, crafters, artists, authors, jewelry makers, etc. If you have a food truck and would be interested in participating or anyone with items to donate to our tricky tray, please contact us at ridgefieldparkarts@gmail.com

We encourage all our residents to support our home-based businesses as well as the Arts Association. Bring your friends! If you have children, bring them along too.

The Ridgefield Park Arts Association is a nonprofit 501c3 organization dedicated to enriching life in the community through art in all its forms.

Our organization is made up of volunteers and is always looking for new members who might be interested in joining. These events not only support our home businesses but also allow our HS students to earn community service hours.

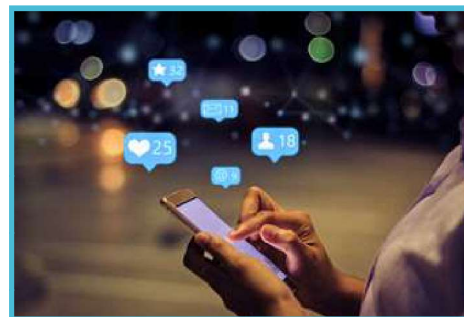
Mark your calendars! Saturday, Nov. 4th, from 11 am to 4 pm at Fellowship Park

STREET FAIR & JAZZ FESTIVAL

This year's street fair will be October 7th from 10:00am until 3:00pm. Also on Main Street that day the village will be holding what we hope will be our first annual Jazz Festival. The stage will be near the intersection of Main & Cedar. Tables and chairs will be setup to about ART MORA. Ridgefield Park students will perform from 10:00am until noon. The Jazz Festival will run from noon until 5:00pm. Come enjoy some great music, order lunch or dinner at the Jazz Festival and have it delivered to your table or go to one of our many great restaurants after the festival.



CALLING ALL RESIDENTS: JOIN THE CONVERSATION!



Hello from Ridgefield Park's Social Media Manager! I launched the @ridgefieldparknj Instagram and Facebook accounts in November of 2022 and officially took over as Ridgefield Park's social media manager on March 1, 2023. I'm thrilled to be working alongside the town to enhance communication, volunteerism, and outreach with our wonderful residents and business owners. Our aim is to create a kind, inclusive, and informative social media presence that caters to residents of all ages. As we continue to grow our online community, I want to take a moment to thank you all for your support and collaboration. I absolutely love working with you and featuring your photos, events, and ideas!

But we're not done yet! We want to hear from YOU: What more can we do to educate and inform our residents and business owners? How has your experience been with our new social media presence? We value your input, and we want to make sure we're meeting your needs as residents of Ridgefield Park. That's why we kindly ask you to take a moment to thoughtfully fill out our online survey. Your feedback is crucial for our continuous growth and improvement in meeting the needs of our community. You can find the survey at linktr.ee/ridgefieldparknj or scan the QR code below. Thank you for your valuable time and input. Let's make Ridgefield Park's online presence even better, together!



Please like us on Facebook!!

<https://www.facebook.com/RidgefieldParkDPW> and always check our webpage on the Village website for important information and upcoming events.

<https://www.ridgefieldpark.org/departments-public-works> Our webpage is there for any questions you may have regarding our schedule and other important information.



We would like to remind all residents, that leaf season will start on October 16th. At that time, you may place yard waste in the street on your sweeper day. Please be reminded not to leave branches in the street. Branches and tree limbs must be tied together in bundles no longer than four feet and placed at the curb on your yard waste day.

Once again, along with Sustainable Ridgefield Park, we will be hosting a FREE paper shredding event and Second Chance Toys collection day on Saturday, October 21st at 24 Industrial Avenue from 9:00 a.m. to 1:00 p.m. Bring your important documents and watch them be shredded on site and bring any plastic toys for recycling.

FOOD WASTE COMPOSTING PILOT PROGRAM

Beginning October 1st the Village will be conducting a Food Waste Composting pilot program. Come to the VFW on October 1st for a food waste composting fair where you can sign up. 100 households will be allowed to participate on a first come first served basis. For information contact Sustainable Ridgefield Park: SustainableRP@RidgefieldPark.org

OCTOBER 15TH CREATIVE PLACEMAKING MEETING @ CIVIC CENTER

The next public meeting to gather opinions on the village's public art program will be held October 15th. 7:30pm on the top floor of the Civic Center. Topics to be covered are the Grove Street public seating area, concerts and other public art.

HEALTH FAIR/BLOOD DRIVE ON OCTOBER 14, 2023, BEGINNING AT 9:00 A.M.

Sustainable RP together with St. Francis and the Catholic Daughters of the Americas, Court 2271 and the Knights of Columbus, will be hosting the annual Health Fair and Blood Drive. The Health Fair will be located upstairs at 106 Park Street from 9:00 a.m. - 1:00 p.m. while the Blood Drive will take place downstairs from 9:00 a.m. - 2:00 p.m.

This year's **health fair is meant to be a one-stop-shop** that will provide you with easy access to information and presenters who may have something to offer you in the way of materials and free items that you can use to improve your health.

We've updated this year's Health Fair to try to include a little something for all ages. It promises to be our biggest health fair to date. Here is just a partial listing of this year's exhibit tables: nutrition, flu and covid vaccines, wellness info, Alzheimer's info, alcohol and drug resources, Narcan, mental health, legal documents for health care, information on clinical trials, as well as info from Bergen's Promise to help families with different concerns, gluten-free and vegan bakery, Columbia University cancer trials, NJ Family Care, ENT & Allergist, Molly Diabetes Center, Healthy Colon, registered dietician, audiology and hearing aids, Ask the Pediatrician, Pearl Vision, Hadnott Foundation, Healthcare Simplicity - disability advocate, Healthy Hub smoothie samples, cancer support and breast education, MedAssist and MedEquipped with info on medical equipment for your home, Medicare consultants, autism information from Montclair University, and much more.

If you wish to receive any of the available vaccines, **please be sure to bring your insurance card and ID.**

And don't forget, during this year's Health Fair, we will also **be hosting a blood drive with the American Red Cross at the K of C building** lower level which will run from 9:00 a.m. - 2:00 p.m. Here's the link to sign up for the blood drive.

<https://www.redcrossblood.org/give.html/driver-results?zipSponsor=Greenteam>. While every effort will be made to accept walk-in donors, it is highly recommended that you reserve your spot to donate. Also, you'll save time signing up in advance because you can complete all paperwork needed to donate. Don't forget, we're also looking for Power Red Donors. There will be a table available to accept donations of non-perishable foods for the food pantry. Please consider helping out when you visit the health fair.



CHIEF JOSEPH RELLA

RIDGEFIELD PARK POLICE DEPARTMENT

School is Open, DRIVE CAREFULLY

With Ridgefield Park Schools scheduled to open on September 7, we ask that all motorists be cautious with children attempting to get to school. Every fall, over 55 million children across the United States head back to school. With 13 percent of those children typically walking or biking to their classes, AAA warns drivers to be especially vigilant for pedestrians before and after school hours. The afternoon hours are particularly dangerous - over the last decade, nearly one in four child pedestrian fatalities occurred between 3 p.m. and 7 p.m.

Slow down: Speed limits in school zones are reduced for a reason. A pedestrian struck by a vehicle traveling at 25 mph is nearly two-thirds less likely to be killed compared to a pedestrian struck by a vehicle traveling just 10 mph faster.

Come to a complete stop: Research shows that more than one-third of drivers roll through stop signs in school zones or neighborhoods. Always come to a complete stop, checking carefully for children on sidewalks and in crosswalks before proceeding.

Eliminate distractions: Research shows that taking your eyes off the road for just two seconds doubles your chances of crashing. Children can be quick, crossing the road unexpectedly or emerging suddenly between two parked vehicles. Reduce risk by not using your cell phone or eating while driving, for example.

Reverse responsibly: Every vehicle has blind spots. Check for children on the sidewalk, in the driveway and around your vehicle before slowly backing. Please do not rely solely on a vehicle's back-up camera.

Resident Vehicle Awareness

We would also like to remind residents to remove key fobs from their vehicles and always lock their vehicle doors. A great deal of vehicle thefts have involved vehicles which have had key fobs left inside. Similarly, a great deal of vehicle burglaries have involved vehicles which had been left unlocked. These crimes often occur, but not

exclusively, overnight. Unfortunately, there also continues to be a rise in catalytic converter thefts throughout the county and state. These thefts involve a sawzall, which can at times be heard during the late night or very early morning hours when these thefts commonly take place. Please remain vigilant and report any suspicious behavior.



SEND US YOUR THROWBACK PHOTOS OF RIDGEFIELD PARK!



Do you have any photos of our village tucked away in your attic, photo album, or digital archives? We want to feature them in our weekly #TBTRP (Throwback Thursday Ridgefield Park) series on social media! Whether it's a snapshot of a local landmark, a community event, or a cherished memory, we want to see them! We welcome any time period - whether the photos are from 6 years ago or 60! Let's see just how far back we can go.

To participate, simply submit your photos to ridgefieldparkmedia@gmail.com, along with any relevant information such as the date, location, and event. By submitting your photos, you consent to their use on our social media channels. Please include your social media handles if you wish to be tagged.

Let's come together as a community to celebrate the unique history of Ridgefield Park. By looking back at where we started and how far we've come, we can be proud of our accomplishments and inspired to continue growing and improving in the future. Who knows what exciting developments and memories the next generation will create in our town! We can't wait to see what treasures you uncover!

Follow the series on [instagram.com/ridgefieldparknj](https://www.instagram.com/ridgefieldparknj) and [facebook.com/ridgefieldparknj](https://www.facebook.com/ridgefieldparknj).

PUMPKIN POLLUTION PREVENTION

More than one billion pounds of pumpkins are grown in the U.S. every year, and after they've been used for Halloween decorations, pies, and jack-o'-lanterns, millions of them—large, mini, orange, white, heirloom—will end up in a landfill. Looking around town on garbage day after Halloween, it is a common sight to see all those pumpkins at the curb. Unfortunately, that means they will go to a landfill and become methane gas. Pumpkin pollution is a problem—here are some things you can do to help.

Methane is a greenhouse gas. Compared to carbon dioxide, it warms the atmosphere in a shorter amount of time, which means it's a particularly potent cause of climate change and landfills—where we send as much as 40 percent of the food we produce—contributes to 14 percent of U.S. methane emissions every year. So, what can you do.... try composting your pumpkin, it puts nutrients back in our soil, it saves water, it doesn't make methane gas - it's a win-win situation. Composting Pumpkins is a way to turn them into great soil. They're just over 90 percent water—naturally adding moisture to compost piles that need to be damp to effectively decompose food waste. And decomposed vegetables and fruits like pumpkins add nitrogen, phosphorus, and potassium to soil, which helps new plants grow. So grab the family, smash your pumpkins into smaller chunks to speed up decomposition and then toss them in a compost bin and if you are one of the 100 households who participate in our Food Waste Composting Pilot starting in October you can bring them there.

Pumpkin is not just a Halloween decoration, but a nutritious fruit that can boost your health in many ways. This stunning squash is considered a Superfood, a title typically reserved for natural foods that are especially nutrient-dense while generally being low in calories. In other words, yes: Pumpkin is very good for you. Here are some of the known health benefits of consuming pumpkin. Pumpkin is great for your eyes, rich in vitamin A, which is really great for your vision. Pumpkin is high in potassium, which is a key ingredient for heart health. It also contains vitamin C, an immune booster that helps reduce cell damage from free radicals. Pumpkin also packs a punch when it comes to other immunity-strengthening antioxidants, including vitamin A, vitamin E and iron and fiber. And don't toss those .

seed which can easily be scooped out, rinsed, and salted or spiced in the oven.

Even Fido can benefit from pumpkin...according to the American Kennel Club, pumpkin puree mixed into dog food can help settle a dog's upset stomach.

And finally, a treat for wildlife? See if any local farms or petting zoos are collecting pumpkins as treats for their pigs, goats, and other animals—or for any other purposes. Our local Bergen County Zoo accepts pumpkin donations so reach out to them for details at 201-634-3110.

SHADE TREE COMMISSION

Preserve energy with the Urban Forest. With the cost of energy on everyone's mind, Ridgefield Park provides a very effective way to help property owners...planting and maintaining the Village shade trees!

Looking around the Village, the aesthetic value of trees is obvious, but there are additional benefits. According to the USDA Forest Service, trees can reduce AC needs by 30 percent and can save 20-50 percent in energy used for heating.

Taking care of this important asset is the Shade Tree Commission's responsibility with the Department of Public Works: planting new trees, pruning established trees, and also removing trees/stumps. To do the best job, the STC encourages the support and cooperation of property owners. The following important information is for property owners to avoid fines for violations:

The public right-of-way extends several feet inside the sidewalks on most RP streets; trees within the right-of-way are the property of RP and all pruning and maintenance of those trees is under the care and supervision of the STC.

Property owners may NOT prune trees, remove trees, or damage trees.

NOTHING may be stapled or nailed or screwed to a Village tree.

Property owners may NOT do any construction, curbing, paving, or laying of sidewalks and/or driveways that may damage a tree without the consent of the STC. Written notice must be given at least 10 working days ahead to provide time for the arborist to examine the site and give recommendations.

Tree roots may NOT be cut for sidewalks or other construction without the approval

of the STC; any cutting must be done by a qualified arborist.

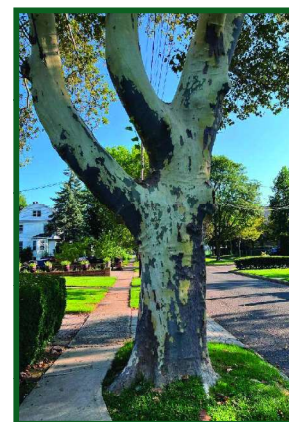
Featured Tree. The focus this issue is on the London Plane Tree, *Platanus x acerifolia*. London Plane trees are currently 6.5% of the Village planting stock.

Wonderful examples of this species line Euclid and Grand Avenues with others scattered throughout the Village. They have a massive stature, 70'-100' high, with wide spreading branches, 60'-85' wide, olive-to-cream mottled bark. An important note concerning the bark. A resident concerned about the health of a London Plane tree because of the bark falling off contacted the STC. It was explained to the resident and printed here for others who might be concerned about the large pieces of bark that the trees shed, especially in July. Although the mottled look left behind may be a concern to residents, the exfoliation is beneficial to the health of these long-lasting, resilient trees.

According to Madison Square Park Conservancy, the old bark rids the tree of parasites, mosses, or fungal diseases that could be detrimental to the tree. The shedding is considered an important form of self-cleansing. VERY importantly, the tree's leaves and bark function as filters absorbing pollutants such as nitrogen oxides and particles.

To contact the STC with a tree request, to volunteer, or to report an issue, email shadetree@ridgefieldpark.org, call 201-641-4950 extension 640, leaving name, tree issue with address of tree, or attend a meeting. The STC meets in the third floor conference room of Town Hall at 7:30 pm on the fourth Monday of each month except for December when the meeting is on the second Monday.

ENJOY THE BRIGHT FALL FOLIAGE THROUGHOUT THE VILLAGE!



LONDON PLANE TREE
EUCLID AVENUE

FROM SUSTAINABLE RP...

Our Swap & Shop at Brewster Park, Saturday, September 23rd is all about the Reuse of Reduce, Reuse, Recycle. Drop off starts at 10:00am and we go from 11:00am - 3:00pm.

Bring gently used clothing, footwear, jewelry, accessories, toys, household goods to exchange for something new-to-you for free.

Stop by our table to drop off bottle caps, disposable razors, alkaline batteries and legos too.

See you at the Street Fair, the Health Fair and Hard Plastics Recycling at DPW in October. Look for our upcoming meetings on the Village Events calendar or send us an [email - sustainablerp@ridgefieldpark.org](mailto:sustainablerp@ridgefieldpark.org)

CALLING ALL LEGOS!

Do you have LEGOS in your house that no longer spark joy? Tired of stepping on them, dusting around them, or getting them stuck in your vacuum? Sustainable RP is collecting LEGOS at the Swap & Shop in Brewster Park on Saturday, September 23rd, at our table during the Street Fair on October 7th and at the DPW during the October 23rd Paper Shredding and Hard Plastics Recycling Collection. We will return them to LEGO for you. Keeping them out of landfills and the ocean and allows you to pass forward your LEGO bricks and share the power of play with kids in need. LEGO Replay works closely with donation partners who proudly give your LEGO bricks new life. Accepted LEGOS: LEGO® System, DUPLO® and Technic™ Bricks and Elements from single or multiple sets, LEGO® Minifigures and Mini-dolls (no need to disassemble),

THE HACK RACE RACE ON THE HACKENSACK RIVER

The 7th Annual HACK RACE - sponsored by RP's Wanda Canoe Club - is scheduled for Saturday, September 30th 2023. This 9-mile and 5KM race is one of the largest paddling events in the northeast with approximately 90 paddlers attending yearly. The race is scheduled to start in Ridgefield Park (behind the DPW bldg on Industrial Ave.) at approximately 12 NOON with turnarounds by the USS Ling and the Historic New Bridge. Spectators are welcome in Ridgefield Park and at bridges along the course. The FDU walking bridge is a favorite for up close views of racers in action!

PROPER LEAF BLOWER ETIQUETTE!

The first and most important rule in using a leaf blower is...DON'T!... for the sake of your neighbors and for the preservation of peace and quiet. In our residential areas **USE A BROOM OR A RAKE! YOUR NEIGHBORS WILL LOVE YOU FOR IT!** Secondly, if you feel you **MUST** use a leaf blower, then realize that somewhere nearby in your neighborhood, you could be annoying one or more of your neighbors! Someone in your neighborhood works nights, or is a mom with small children that take naps, or elderly persons who may find extended loud sounds disturbing. With that in mind, keep your use of a leaf blower **BRIEF!** You don't need to go out and blow off every square inch of your property **EVERYDAY!**

Also, leaf blowers are called leaf blowers for a reason! They are designed to blow **LEAVES!** Not sand, acorns, snow, gravel!!!! So, only use them in the fall to blow leaves and, when you do, try to limit the use. Limit yourself to only leaf blowing once a week in the fall. You **REALLY** don't have to attack your lawn with a leaf blower every time a leaf falls!! **PLEASE** help by doing your part in protecting the peace and quiet in our neighborhoods, by limiting or eliminating your use of leaf blowers.

OCTOBER 21ST EVENT - PAPER SHREDDING AND HARD PLASTICS RECYCLING

On Saturday, October 21st from 9am-1pm bring your confidential papers for shredding, any hard plastics that you want to get rid of to the DPW located at 24 Industrial Avenue. Sustainable RP will be there to collect alkaline batteries and legos as well.

Hard plastics or bulky rigid plastics are those that cannot go in curbside recycling on Wednesdays and are challenging for recyclers to collect, process, and manage.

Here's what we are taking:

plastic tables and chairs
lawn furniture
laundry baskets
buckets
crates
storage containers and lids
garbage cans and lids
children's play sets
plastic toys that are missing pieces or broken

The Ridgefield Park DPW and Sustainable Ridgefield Park will continue to provide residents with recycling opportunities and sustainability education. Please contact sustainablerp@ridgefieldpark.org with questions or if you are interested in joining us.

BUSKING - ANOTHER WORD FOR STREET PERFORMERS

Busking or performing in public for those who pass by is a vibrant addition to any community. Busking is mostly musicians playing for their own enjoyment, your appreciation and often they will take tips. But busking isn't limited to musicians. Poets, jugglers, magicians, dancers, etc. are all busking if they are performing in a public place.

Several municipalities in Bergen County allow and encourage busking. Among them Fort Lee has allowed it the longest. Westwood allowed it with the start of Covid to help the artist community which was so hard hit by the economic impacts of the pandemic. Ridgefield Park first officially allowed busking in 2022.

While not confined to the Main Street & Grove Street area that is where it is currently encouraged. On Thursday and Saturday evenings you can hear buskers in the Main Street & Grove Street area. Stop, listen and thank them with your applause & a tip.

On September 30th from noon to 8:00pm on Grove Street in Ridgefield Park the first Bergen Busking Festival will be held showcasing buskers from many municipalities in the county. Every year the festival will be held in a different municipality. Come and support all the buskers this year in Ridgefield Park.

PLEASE PLAY ME

That is the sign on our street piano on Grove Street in the public seating area. It was donated to the village and would have otherwise ended up in the landfill.

Walking past you may hear someone playing. Most often they are practicing or playing for their own enjoyment. Even though they don't have a "tip jar" they are actually busking.

On August 2nd the piano was host to an "open piano" evening. Pianists from the village took turns playing the piano and enjoying each others music. There were many spectators present. It was a wonderful evening and a great addition to our public events.

Please play the public piano and brighten the day of those passing by.



Village of Ridgefield Park Upcoming Events

Word on the Street	Fri., Sept. 8 - 7:00pm - 9:00pm	Grove Street
National Dance Day	Sat., Sept. 16 - 3:00pm - 6:00pm	Grove Street
Swap N'Shop & Green Fair	Sat., Sept. 23 Drop off begins 10:00am Event starts 11:00am - 3:00pm	Brewster Park
DEA Drug Takeback	Sat., Sept. 23 - 10:00am	RP Police Department
EPS Densifier Ribbon Cutting	Wed., Sept. 27 - 11:00am (Recycling Center closed for normal drop-offs on 9/27)	DPW Recycling Center
Bergen Busking Festival	Sat., Sept. 30 - noon - 8:00pm	Grove Street
Wanda Canoe Club Race	Sat. Sept 30th - noon	Behind DPW/on Hackensack River
Food Waste Composting Kickoff	Sun., Oct. 1 - 1:00pm - 3:00pm	VFW, Bergen Turnpike
Street Fair	Sat., Oct. 7th - 10:00am - 3:00pm	Downtown
Jazz Festival	Sat. Oct. 7th - noon - 5:30pm	Downtown near Cedar St.
Health Fair & Blood Drive	Sat., Oct. 14th Health Fair 9:00am - 1:00pm Blood Drive 9:00am - 2:00pm	Knights of Columbus
Creative Placemaking meeting	Sun. Oct. 15th - 7:30pm	Civic Center
Rag-a-Muffin Parade	Sat., Oct. 21 11am Raindate Oct 28th	Fellowship Park Euclid Ave.
Paper Shredding and Hard Plastic Recycling	Sat., Oct. 21 - 9:00am	DPW Recycling Center
Fall Market & Festival by the Ridgefield Park Arts Association	Sat., Nov. 4th - 11:00am - 4:00pm	Fellowship Park
Baby Products Drive RP Moms	Sat., Nov. 18th - noon - 3:00pm	Civic Center