

Village of Ridgefield Park Supplemental CSO Team

Meeting Number 7

Commissioner's Conference Room

Village of Ridgefield Park Municipal Building


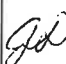
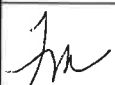




January 23, 2019, 9:00 am

Group Meeting Minutes

1. Introduction
 - a. Meeting began at 9:00 am
 - b. John Rolak opened the meeting with an introduction of our new member – John Ponticorvo of the Wanda Canoe Club and questioned John on his knowledge of combined sewer systems. John Ponticorvo indicated that he had reviewed the information on the Village website.
 - c. John Dening introduced a safety discussion on post-holiday blues.
 - d. John Dening reviewed the topics discussed at the last quarterly meeting held on October 1, 2018 and asked if there were any questions on the previous meetings. There were no questions.
2. Presentation by John Dening on the project status followed by a discussion of the preliminary evaluation of alternatives and the draft report (see presentation).
3. Discussion and Questions:
 - a. Mark Olsen asked whether allowing more flow into Overpeck Creek would reduce street flooding on Bergen Turnpike, which is serviced by separate stormwater sewers. It was explained that the area of flooding has a low elevation and that this segment of the Overpeck was tidal. It is anticipated that the flooding is caused by extreme high tides and that there was not much difference between the street flood elevation and the tide. It was suggested that the solution of the problem would be to pump stormwater out of the system during these events.
 - b. There was some discussion on Earth Day event on May 11th and whether the Village should again have some information on the current project. Mott MacDonald agreed and just asked that we be informed of anything being planned so that we could assist with possible materials.
 - c. John Ponticorvo asked what NYC was doing with their CSOs and whether we could follow their lead. It was explained that the Village needed to follow the requirements under the Village's NJPDES permit, but that we would use any information that may be available from NYC and their program.
 - d. Mark Olson then said that various groups had events at Waterfront Park to encourage boating and fishing and whether the CSO signs that had been installed as part of the permit process (including no fishing) meant that they should not be doing these programs since might be dangerous and if nothing else confusing to residents and parents. John Rolak noted that due to other contaminants in the sediments, including dioxin that only catch and release should be practiced. Mark noted that is what they are practicing, but that it was not in agreement with the signage. John Rolak indicated that we would bring this question to the NJDEP to see if they could clarify the issue.
4. Next meeting will be scheduled for end of April or beginning of May.
5. Meeting concluded at 10:15 am

Minutes submitted by John Rolak

Village of Ridgefield Park
Supplemental CSO Team
Meeting Number 7 – Characterization Report
Commissioner's Conference Room
Village of Ridgefield Park Municipal Building
January 23, 2019, 9:00 AM

Initials	Name	Organization	Email	Phone Number
	John Rolak	Mott MacDonald	john.rolak@mottmac.com	973-912-2521
	John Dening	Mott MacDonald	John.dening@mottmac.com	973-912-2464
	Donna Gregory	Mott MacDonald	donna.gregory@mottmac.com	
	Flo Muller	Ridgefield Park Shade Tree Commission	flomart@nj.rr.com	201-814-9019
	Mark Olson	Chairman, Green Team	mark-olson@verizon.net	201-440-5989
	Stephen Quinn	Ridgefield Park Environmental Commission	stephencquinn@aol.com	201-440-5652
	Linda Quinn	Ridgefield Park Environmental Commission	linda.quinn125@gmail.com	201-440-5652
	John Ponticorvo	Wanda Canoe Club	jponticorvo@aol.com	201-803-3643
	Alan O'Grady	R.P. DPW	AOG560@Aol.com	201-440-4860
	Edward Monroe	RP DPW	EMONROEB@ridgfieldpark.org	201-440-4860



Development and Evaluation of Alternative Controls – Update

Ridgefield Park Supplemental CSO Team Meeting #7

January 23, 2019



Safety Topic

Post Holiday Blues

Causes

- Loss of social activities and interactions
- Seasonal conditions – cold and dark
- Fatigue
- Overindulging

Recommendations

- Schedule social interactions
- Exercise
- Set attainable goals
- Plan things to look forward to.
- Take care of yourself



Adapted Psychology today Jan, 12, 2014

Ridgefield Park Supplemental CSO Team

Meeting No. 7 Agenda

Refresher – In meeting #6 we covered:

Development and Evaluation of Alternatives

- What is the Goal of Alternative Control?
- What are the Regulatory Requirements?
- This Leads us to:
 - Overview of Alternatives
 - Treatment of CSO discharge
Bayonne Pilot Study



Mott MacDonald | Presentation

3

04 April 2019

Ridgefield Park Supplemental CSO Team

Meeting No. 7 Agenda

- Submissions Status
- Comments from NJDEP on Characterization and Public Participation Reports
- Preliminary Evaluation of Alternatives
 - Siting
 - Green Infrastructure
 - Inline Storage
 - Conveyance
- NJ CSO Group Coordination
- Draft Report Outline
- Future Public Participation
- Upcoming Schedule

Mott MacDonald | Presentation

4

04 April 2019

Ridgefield Park Supplemental CSO Team

DEP review status – July 1, 2018 submittals

- **Consideration of Sensitive Areas Report:** NJ CSO Group report; DEP comment letter dated 9/20/2018; revised report submitted to DEP on 10/19/2018.
- **Public Participation Process Report:** comment letter dated 11/8/2018; revised report submitted 1/7/2019 – On Time!
- **Baseline Compliance Monitoring Program Report:** NJ CSO Group report; DEP comment letter dated 9/7/2018; revised report submitted to DEP on 10/5/2018.
- **System Characterization Reports:** comment letter dated 12/17/2018, revised report progressing. Due 02/15/2019.


Mott MacDonald | Presentation

5

04 April 2019

Ridgefield Park Supplemental CSO Team

Public Participation Report NJDEP Review Comments


State of New Jersey

PHIL MURPHY
Governor

DEPARTMENT OF ENVIRONMENTAL PROTECTION
Mail Code: 401-02B
Water Pollution Management Element
Division of Surface Water Permitting
P.O. Box 420 • 401 E. State St.
Trenton, NJ 08646-0420
Phone: (609) 292-4860 / Fax: (609) 946-7938

CATHERINE R. MCABEE
Commissioner

November 8, 2018

Alan O'Grady, DPW Superintendent
Village of Ridgefield Park
24 Industrial Avenue
Ridgefield Park, NJ 07660

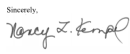
Re: Review of Public Participation Process Report Required by Part IV D.3.b.ii
Village of Ridgefield Park, NJDES Permit No. NJ0109118

Dear Mr. O'Grady:

Thank you for your timely submission dated July 1, 2018 as entitled "Supplemental CSO Team Public Participation Report". This report was submitted by Village of Ridgefield Park. Public participation should actively involve the affected/intended public through each of the three steps of the Long-Term Control Plan (LTCP) process. The required elements of the Public Participation Process Report and Supplemental CSO Team are defined at Part IV G.2.b and Part IV G.2.c of your NJDES permit. The New Jersey Department of Environmental Protection (Department) has evaluated your submission against these permit requirements and requests that you provide a revised Public Participation Process Report by December 10, 2018 that addresses the topics described in the column titled "Actions" of the attached document.

Department staff are available to speak with you in further detail about our evaluation of your Report and to discuss your revised Report submitted as due on December 10, 2018.

Thank you for your cooperation.

Sincerely,

Nancy Kempel
Section Chief
Bureau of Nonpoint Pollution Control

C: Susan Rosenwinkel, Bureau of Surface Water Permitting
Joe Mannick, Bureau of Surface Water Permitting

Village of Ridgefield Park Public Participation Report Evaluation		
Does this Report include clear discussion of the following: Goals and desired outcomes for actively involving the affected public.	Summary of Findings	Actions
A description of outreach to hydraulically connected municipalities served by the same sewer treatment plant, including municipalities with separate sewer systems. Identification of the affected public.	Section 4.2 is titled "Goals and Desired Outcomes for Involving the Public." The information listed in this section does not pertain to goals of educating, engaging and empowering the affected public to provide feedback regarding the LTCP. While the topics listed in this section are important to seek public input on, these topics are not goals of a public participation process. Neither BCLA's, watershed's, nor Ridgefield Park's reports discuss how the 47 municipalities in the BCLA sewer service area will be engaged. Section 3.1 of the report identifies one group of the affected public with no further breakdown of actual entities that fall within these general groups.	Create goals for the public participation process that include ways to effectively communicate and engage the affected public. Section 4.2 states that "We begin by exploring in simple terms the history of the infrastructure. Later the audience will learn about the anticipated pollutant loads from CSO discharges, environmental impacts. " Clarify which audiences will receive the information, how, and when. Demonstrate engagement of hydraulically connected sewer service communities.
Information on the variety of outreach and engagement activities already completed: • description of outreach methods used, • why each outreach method was selected, and • outcome of the engagement activity (such as completed surveys, number of those in attendance, or summary of feedback from attendees).	The report discusses several outreach materials that have been developed. Other than one newsletter and a discussion that brochures would be made available, the report does not discuss if, how, and when these materials were distributed. Other than general outreach, the report does not include a discussion of engagement methods used for feedback.	Provide information on the effectiveness of existing methods. Begin tracking metrics, such as the number of visitors to tables at public events and number of brochures/flyers distributed at public events, number of emails received to CSO email account, number of visitors to CSO webpage, number of locations in the Village where CSO Team/brochures are offered. Consider other methods of engagement such as staffing table at local events to distribute materials and adding links to the webpage for information on the Supplemental CSO Team and copies of reports submitted to the Department in preparation of the LTCP.
Information on planned outreach and engagement activities: • description of outreach methods to be used, • why each outreach method was selected, and • description of desired outcomes.	Limited details have been provided. The report identifies parts of the process, but not how planned activities will be conducted.	Provide a description of the variety of future/planned methods, why the method was selected, and a description of the desired outcome. Provide details on approximately when the public will have the opportunity to provide feedback, the mechanisms to notify the public of these opportunities, and the topics of these feedback opportunities. Additional methods must be utilized, with specifics on how that method will be conveyed, and to whom. While the report makes several statements on the intention to get feedback from stakeholders on LTCP issues, the report does not sufficiently demonstrate the opportunities for feedback will be provided; specific information feedback will be sought on, nor how the affected public will be informed of the opportunity to provide feedback. Information about the types of metrics that will be used to evaluate public outreach should be provided, such as the number of visitors to tables at public events and number of brochures/flyers distributed at public events, number of emails received to CSO email account, number of visitors to CSO webpage, number of locations in the Village where CSO Team/brochures are offered.
How the public engagement activities provide opportunities for the public to be engaged throughout all three stages of the LTCP development process: • System Characterization • Development and Evaluation of Alternatives, and • Selection of Alternatives and Implementation of the LTCP	Limited details have been provided. The Supplemental CSO Team has meetings in line with the process, however the broader public participation is not demonstrated in the report to engage with the public throughout all three stages of the LTCP development process.	Sufficiently demonstrate that engagement and feedback opportunities are planned and will be implemented during the development and evaluation of alternatives and the selection of alternatives and implementation.
How the feedback from the public will be considered in the decision-making process.	A general statement of intention that feedback from the public will be evaluated during the process is provided. There is no discussion on how feedback from the public will be sought.	Provide information on what the public has been and will be provided with to provide feedback on and the mechanism for which they can provide the feedback (i.e. surveys, public meeting, website form/email address).

Mott MacDonald | Presentation

6

04 April 2019

Ridgefield Park Supplemental CSO Team

Public Participation Report NJDEP Review Comments

Many of the Comments Went Far Beyond NJPDES Requirements, e.g.

- Tracking and Reporting on Visitors to Website
- Tracking Handouts and Where they are Placed
- Obtaining other Public Input on Plan
- Detailing How Public Will be Informed

On Progress of LTCP
Implementation

Issue – Some difficult to implement
Some part of next permit cycle.

Mott MacDonald | Presentation

7

04 April 2019

Ridgefield Park Supplemental CSO Team

Public Participation Report – Key Comments

Demonstrate engagement of hydraulically connected separately sewered communities.

- Begin tracking metrics, such as the number of visitors to tables at public events and number of brochures/flyers distributed at public events; number of emails received to CSO email account; number of visitors to CSO webpage; number of locations in the Village where CSO flyers/brochures are offered.
- Consider other methods of engagement such as staffing a table at local events to distribute materials.
- Add links to the webpage for information on the Supplemental CSO Team and copies of reports submitted to the Department in preparation of the LTCP.

Mott MacDonald | Presentation

8

04 April 2019

Ridgefield Park Supplemental CSO Team

Public Participation Report – Key Comments

Permittees may consider providing opportunities for the Supplemental CSO Team to review key draft submittals.

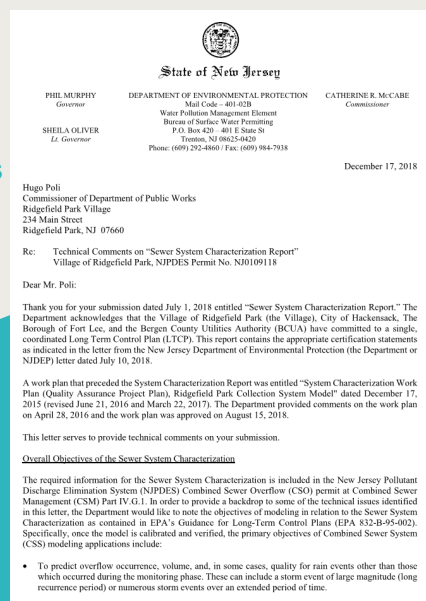
- If BCUA/Ridgefield Park considers this option, it is recommended that a general timeline is provided with target dates for distribution of draft reports, deadline for submission of comments, and how any changes to the reports before final submission will be shared back to the team.
- Consider how BCUA/Ridgefield Park will inform the team that this type of information is available for review.
- There are some members of the team that may have left the position or are inactive. An effort should be made to bring additional members to the team as soon as possible.

Ridgefield Park Supplemental CSO Team

Public System Characterization NJDEP Review

27 Comments total

Most requested additional clarification, or minor corrections



Ridgefield Park Supplemental CSO Team

Public System Characterization – Key Comments

For the sake of completeness please clarify why additional rainfall monitoring was conducted; confirm that the same location was utilized for the rain gage;

Section 4.1, Collection System. Part IV.G.1.b of the permit requires a thorough review of the entire collection system that conveys flows to the STP, including areas of sewage overflows. Therefore, the report must include a discussion of areas that are prone to flooding based on observed and reported incidents, including dates of occurrence, type of storm events that cause the flooding, and antecedent conditions, if known.

Ridgefield Park Supplemental CSO Team

Public System Characterization – Key Comments

Section 5.3, Wet Weather Flow and Subcatchment Characteristics. This section describes the variables used in the SWMM Runoff method including Subcatchment Area; Subcatchment Width; Subcatchment Slope, Depression Storage, Infiltration Coefficients; and Overland Flow Routing Coefficient (Manning's Roughness). Please provide a table to include all subcatchments for each of these input parameters for the modeled areas in tabular format and be sure to include data for Directly Connected Impervious Area (Effective Impervious). In addition, please provide the final values used after successful model calibration and a comparison to the range of acceptable literature values.

Ridgefield Park Supplemental CSO Team

Public System Characterization – Key Comments

Section 7, Consideration of Sensitive Areas. This section addresses the Consideration of Sensitive Areas which is the subject of a separate report submitted on behalf of Ridgefield Park by the NJCSO Group.

- Given that this report is not yet approved and that the Department required additional information regarding primary contact and kayaking in its September 20, 2018 comments on that report, the Department does not agree that it is appropriate to conclude that “There are no identified sensitive areas within Ridgefield Park, accordingly no addition[al] steps are planned to address sensitive areas.”

Ridgefield Park Supplemental CSO Team

What does the permit say?

The permittee shall evaluate a reasonable range of CSO control alternatives that will meet the water quality-based requirements of the CWA

The Development and Evaluation of Alternatives Report shall include a list of control alternative(s) evaluated for each CSO enabling the permittee, ...to select the alternatives to ensure the CSO controls will meet the water quality-based requirements of the CWA

The permittee shall evaluate the practical and technical feasibility of the proposed CSO control alternative(s), and water quality benefits and give the highest priority to controlling CSO discharges to sensitive areas

The permittee shall select either the Demonstration or Presumption Approach

Ridgefield Park Supplemental CSO Team

Development and Evaluation of Alternatives Report

- Green Infrastructure
- Increased Storage Capacity
- Infiltration and Inflow Reduction
- Sewer Separation
- Satellite Treatment of CSO Discharge
- Bypass of Secondary Treatment at STP
- Treatment Plant Expansion

Ridgefield Park Supplemental CSO Team

Development and Evaluation of Alternatives Report - Siting

Objective: To identify potential sites for storage or end-of-pipe treatment.

Analysis using GIS (mapping) data, including:

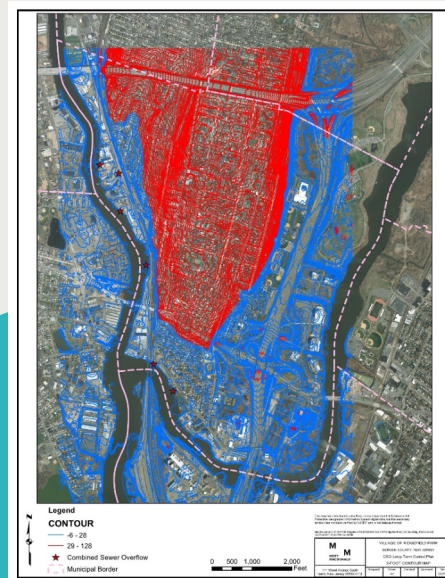
- Aerial photography
- Land Use / Land Cover
- Property data (vacant land, land ownership, etc.)
- Open Space / Green Acres
- Soil Type
- Topography
- Contaminated Sites
- Brownfields



Ridgefield Park Supplemental CSO Team

Development and Evaluation of Alternatives Report - Siting

- **Aerial Imagery and Land Use Classification**
 - Structures vs. Paved vs. Vegetated
 - Open Space, Industrial, and Commercial vs. Residential and Transportation Corridors
 - Green Acres – NJDEP Approval – Propose GSI
- **Parcel Data**
 - Public vs. Private Ownership
- **Soil Type**
- **Topography**
 - Difference in elevation between site and outfall/regulator
 - Distance between site and outfall/regulator
- **Known Contaminated Sites and Brownfields**
 - Severity of contamination
 - Status of cleanup



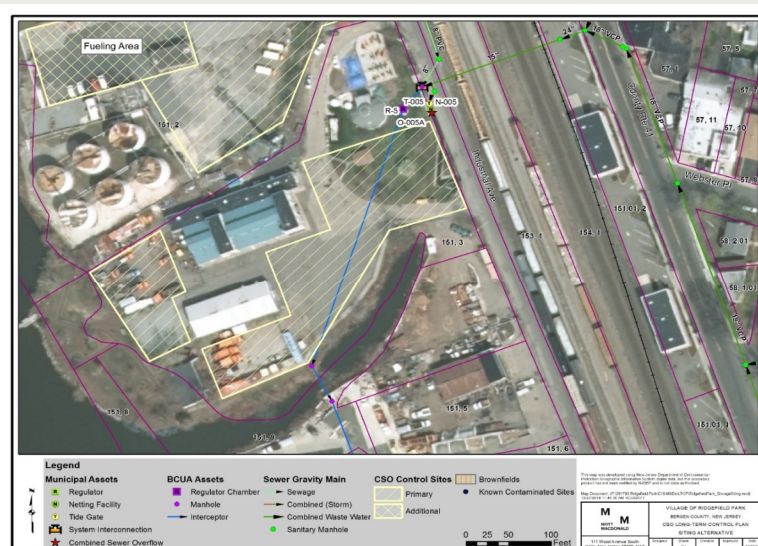
Ridgefield Park Supplemental CSO Team

Development and Evaluation of Alternatives Report – Example Site

Area available: 0.8 Acres

Ownership: Village of Ridgefield Park

Land use considerations:
DPW Operations



Ridgefield Park Supplemental CSO Team

Development and Evaluation of Alternatives Report – Siting Green Infrastructure

Green infrastructure (GI) = practices which reduce stormwater volume or flow rate by allowing the stormwater to infiltrate, to be treated by vegetation or by soils, or to be stored for reuse

- Desktop, planning-level study
- Estimate upper bound on impervious acres that could be feasibly managed by GI practices
- Following Chapter 2 “Locating and Assessing the Feasibility of Green Infrastructure” from NJDEP guidance document *Evaluating Green Infrastructure: A Combined Sewer Overflow Control Alternative for Long Term Control Plans*

Mott MacDonald | Presentation

21

04 April 2019

Ridgefield Park Supplemental CSO Team

Development and Evaluation of Alternatives Report – Siting Green Infrastructure

Analysis using GIS (mapping) data, including:

- Boundary of combined sewer area
- Aerial photography
- Land Use / Land Cover
- Tax parcels including area and ownership
- Building footprints
- Impervious area
- Streets
- Soil Type / Depth to Water (limited info on soil infiltration potential b/c urban land)
- Contaminated Sites

Mott MacDonald | Presentation

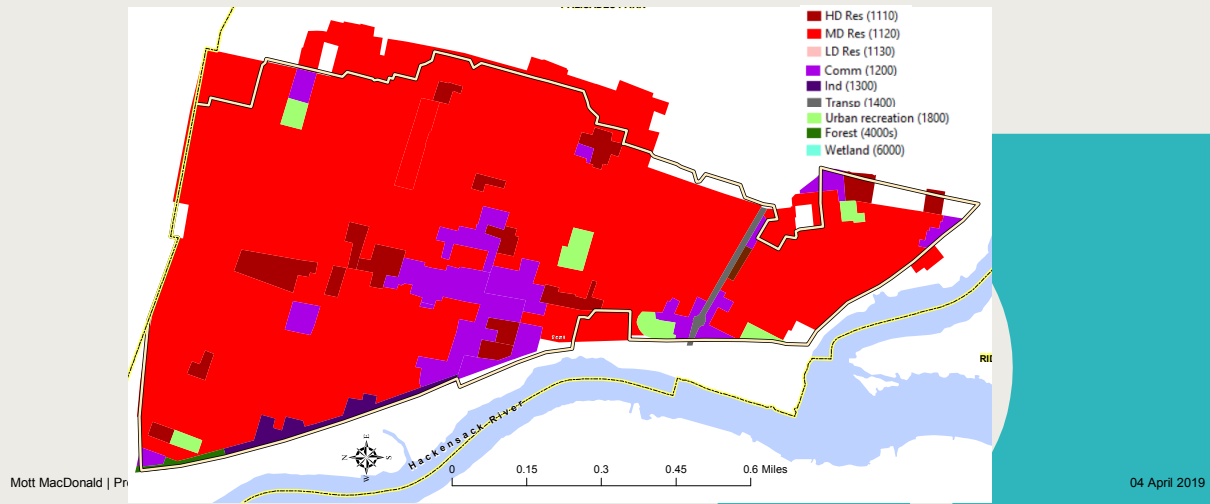
22

04 April 2019

Ridgefield Park Supplemental CSO Team

Development and Evaluation of Alternatives Report – Siting Green Infrastructure

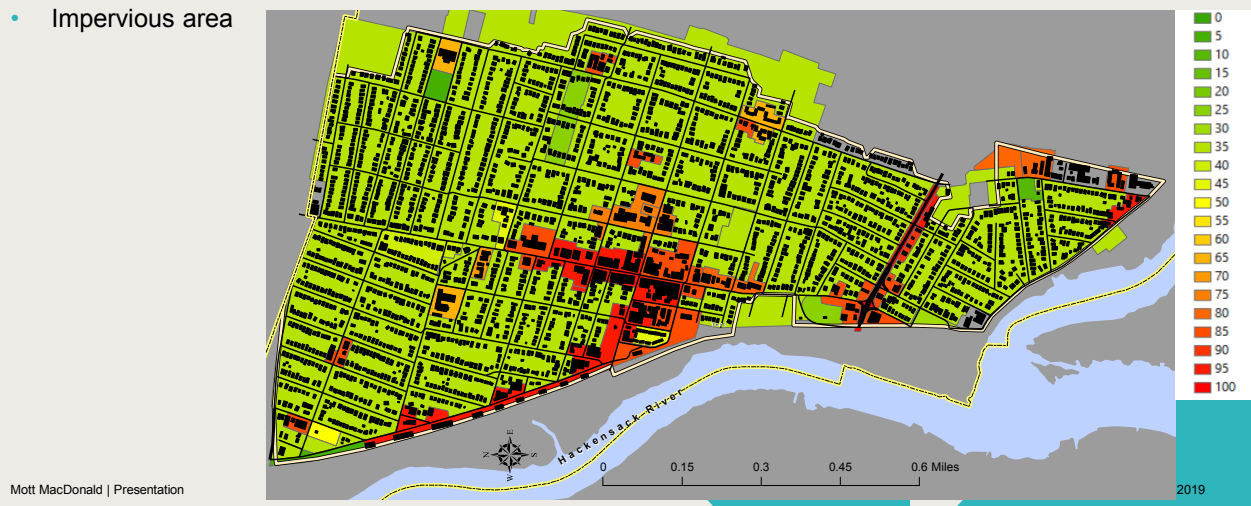
- Land Use / Land Cover



Ridgefield Park Supplemental CSO Team

Development and Evaluation of Alternatives Report – Siting Green Infrastructure

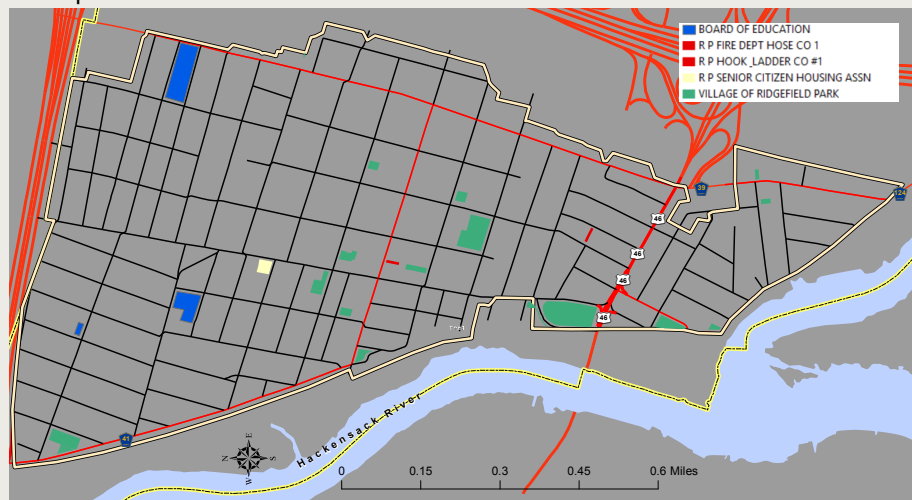
- Building footprints
- Impervious area



Ridgefield Park Supplemental CSO Team

Development and Evaluation of Alternatives Report – Siting Green Infrastructure

- Property Ownership



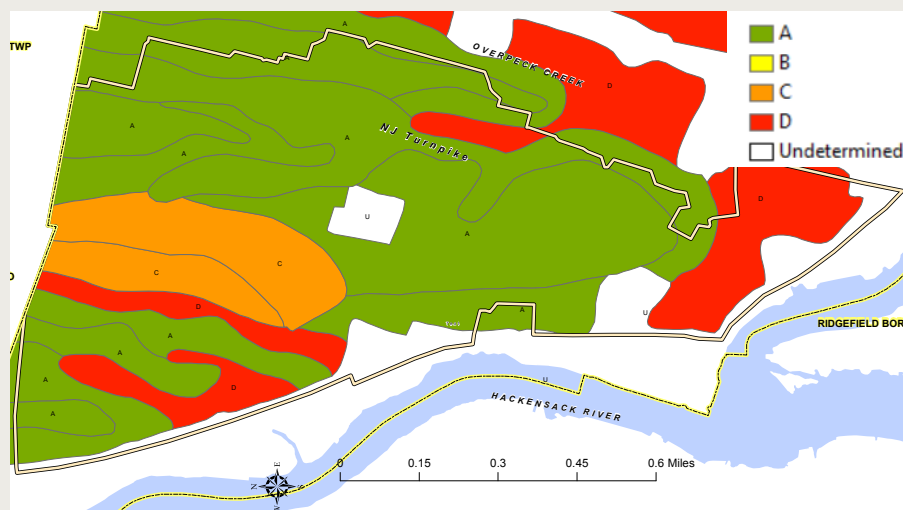
Mott MacDonald | Presentation

04 April 2019

Ridgefield Park Supplemental CSO Team

Development and Evaluation of Alternatives Report – Siting Green Infrastructure

- Soil Type



Mott MacDonald | Presentation

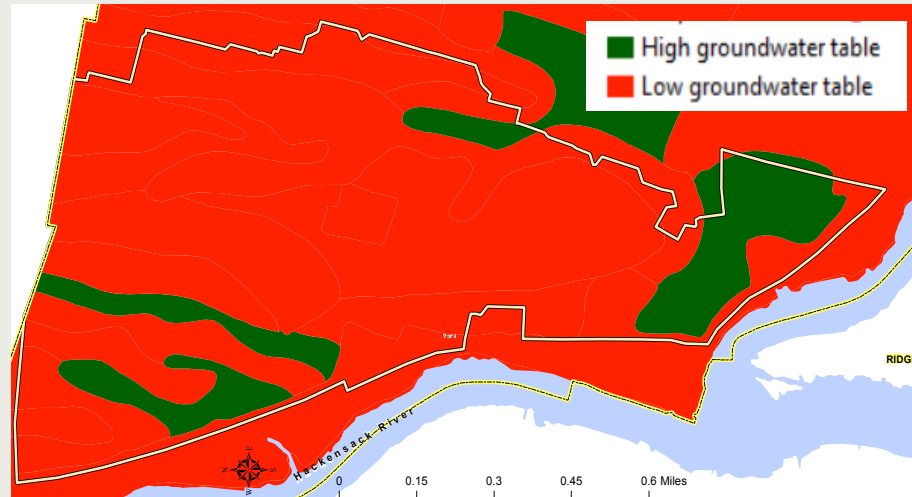
26

04 April 2019

Ridgefield Park Supplemental CSO Team

Development and Evaluation of Alternatives Report – Siting Green Infrastructure

- Depth to Water



Mott MacDonald | Presentation

27

04 April 2019

Ridgefield Park Supplemental CSO Team

Development and Evaluation of Alternatives Report – Siting Green Infrastructure

Strategies considered:

- Bioretention (raingardens, bioswales, etc.)
- Pervious pavement
- Dry wells

Potential locations considered:

- City right-of-way – curb strip
- City right-of-way – shoulder in non-parking locations
- City public and school properties
- Parking lanes
- Parking lots
- Roofs – dry wells



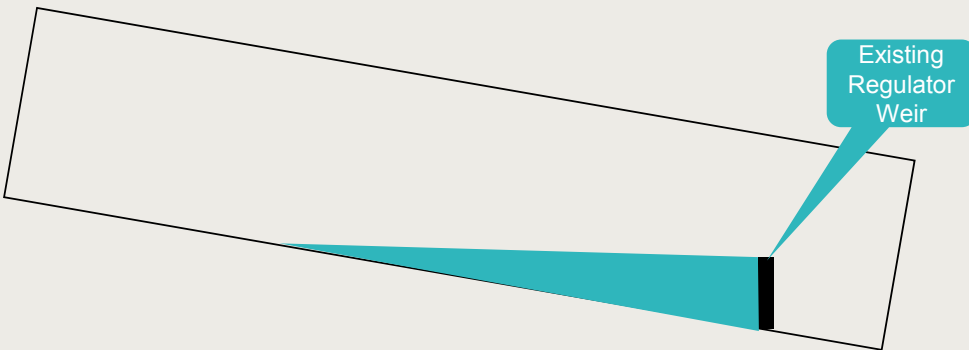
Mott MacDonald | Presentation

28

Ridgefield Park Supplemental CSO Team

Development and Evaluation of Alternatives Report – Inline Capacity

Maximize inline storage capacity



Mott MacDonald | Presentation

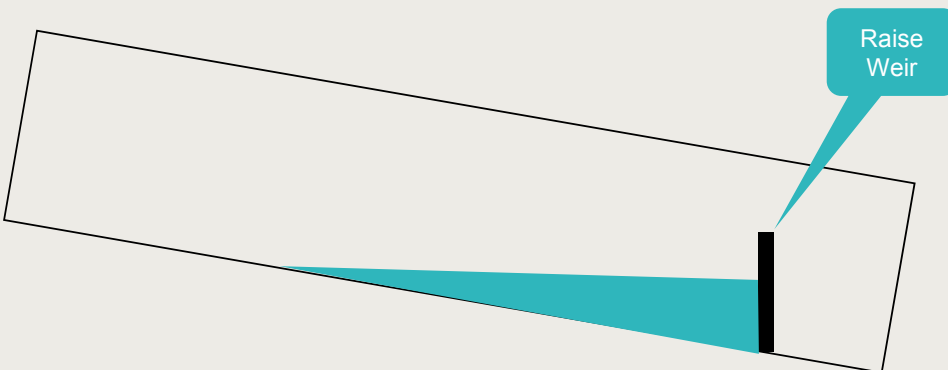
29

04 April 2019

Ridgefield Park Supplemental CSO Team

Development and Evaluation of Alternatives Report – Inline Capacity

Maximize inline storage capacity



Mott MacDonald | Presentation

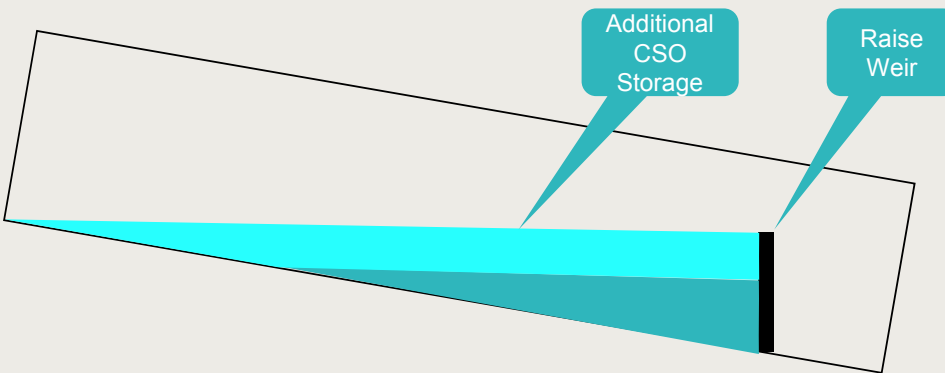
30

04 April 2019

Ridgefield Park Supplemental CSO Team

Development and Evaluation of Alternatives Report – Inline Capacity

Maximize inline storage capacity



Mott MacDonald | Presentation

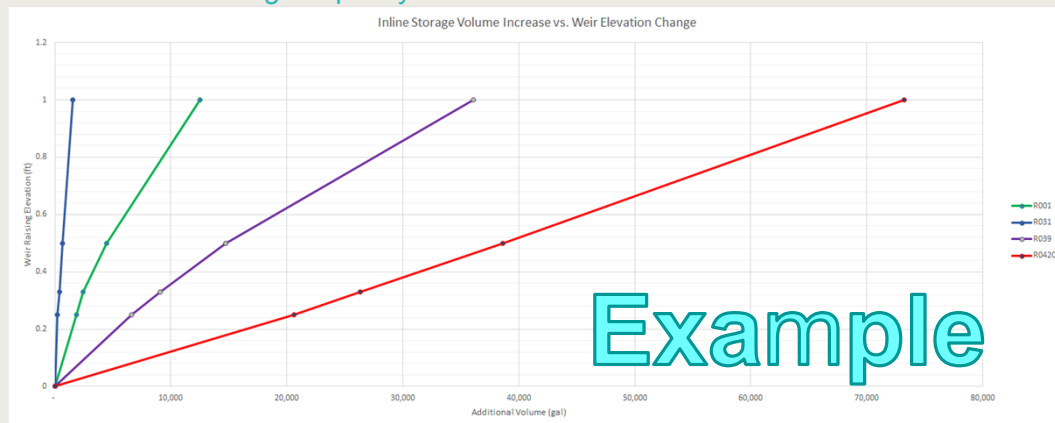
31

04 April 2019

Ridgefield Park Supplemental CSO Team

Development and Evaluation of Alternatives Report – Inline Capacity

Maximize inline storage capacity



Mott MacDonald | Presentation

32

04 April 2019

Ridgefield Park Supplemental CSO Team

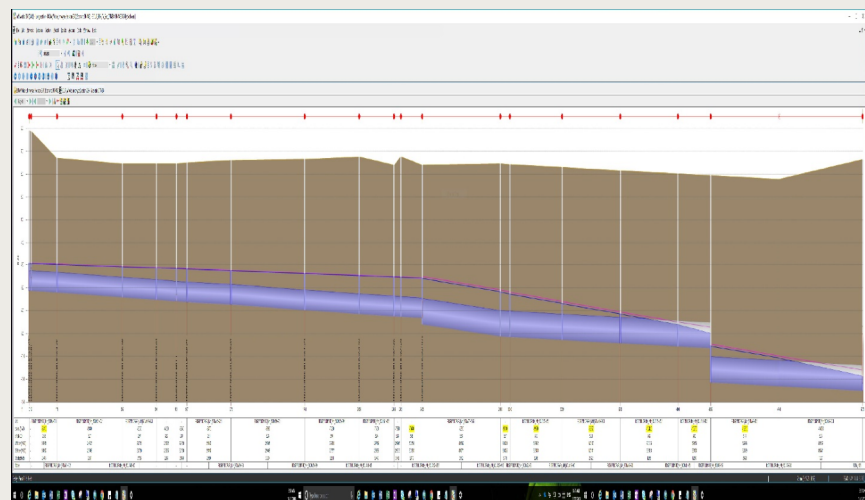
Development and Evaluation of Alternatives Report – Inline Capacity

Maximize inline storage capacity

Works best with large flat pipes, which are not typical in Ridgefield Park

Ridgefield Park Supplemental CSO Team

Development and Evaluation of Alternatives Report – Maximize Conveyance to WWTP

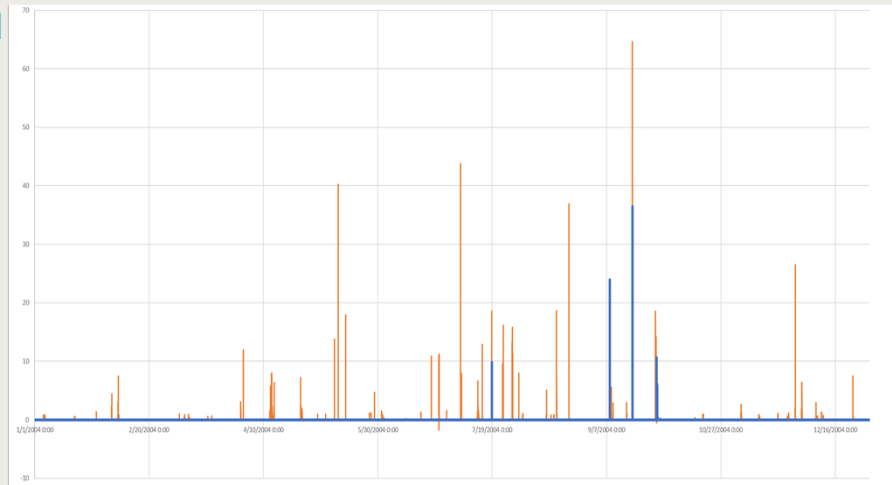


Ridgefield Park Supplemental CSO Team

NJ CSO Group Coordination

- **Levels of Control**

- 0 Overflows
- 4 Overflows
- 8 Overflows
- 12 Overflow
- 20 Overflows
- 85% Capture



Mott MacDonald | Presentation

35

04 April 2019

Ridgefield Park Supplemental CSO Team

Development and Evaluation of Alternatives Report – DRAFT Outline

- **Introduction**
- **General Information**
- **Water Quality Objectives**
- **Development of Alternatives**
 - Development and Screening Levels
- **Costing**
- **Available Land Analysis**
- **Alternatives Evaluation**
- **Summary**
- **References**

Mott MacDonald | Presentation

36

04 April 2019

Ridgefield Park Supplemental CSO Team

Future Public Participation Activities

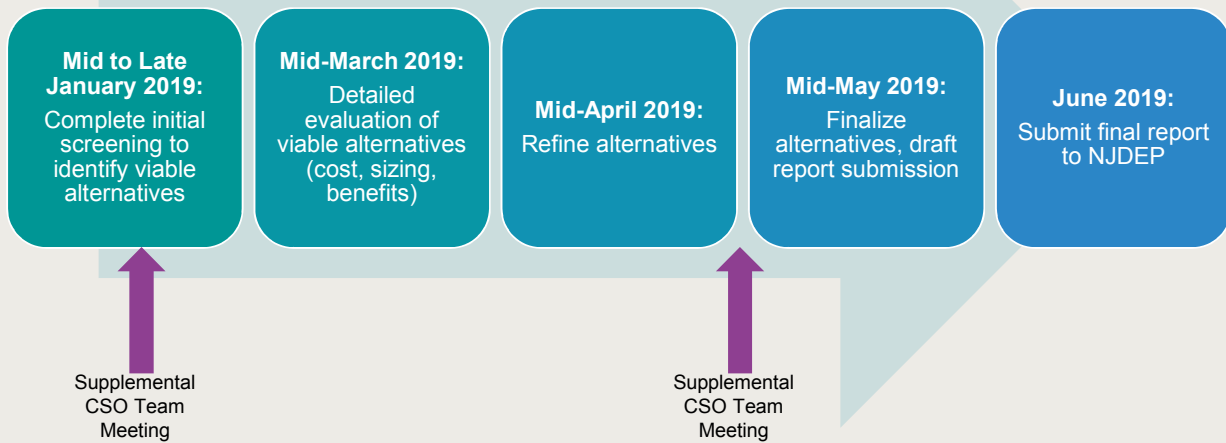
- Looking for Supplemental CSO Team to liaise with public and other groups.
- New members
- Input on additional outreach opportunities.

Mott MacDonald | Presentation

37

Ridgefield Park Supplemental CSO Team

Upcoming Schedule



Mott MacDonald | Presentation

38

04 April 2019

Upcoming Schedule

January 25, 2019 – Quarterly Report Due to NJDEP

March 2019 – Anticipated Next Supplemental CSO Team Meeting

July 1, 2019 – Development and Evaluation of Alternatives Report Due to NJDEP

- Develop Comprehensive List of Alternatives
- Screen Alternatives
- Evaluate Alternatives
- Cost Estimates
- Coordinate with other Members of BCUA Group
- Produce and Submit Report

Final Questions?

Thank You?

Mott MacDonald | Presentation

41

04 April 2019



Title here and build upwards (Max 2 lines)

Subtitle will go here and build downward
Please don't go smaller than 16pt

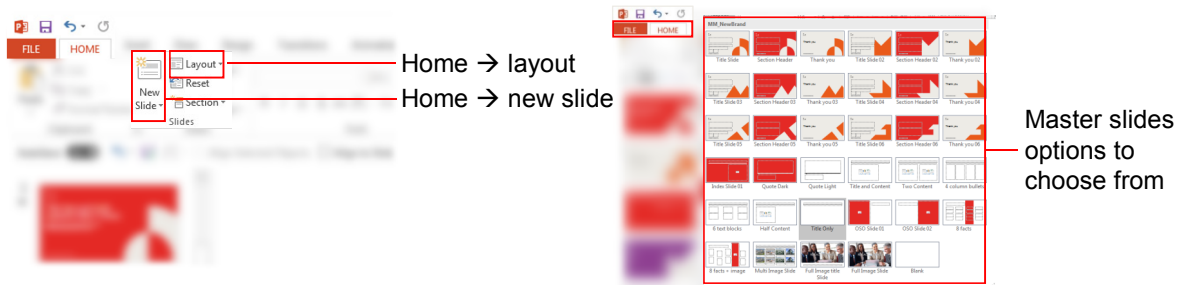


Title here and build upwards (Max 2 lines)

Subtitle will go here and build downward
Please don't go smaller than 16pt

Client name may be inserted in this section

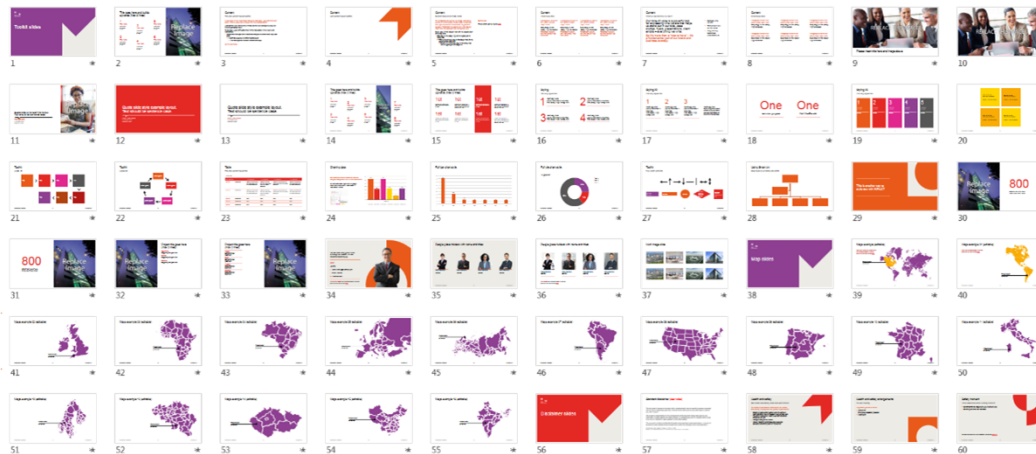
Where to find the most commonly used slides



Don't forget to update the footer: **Insert → Header and Footer**

Where to find the toolkit slides, to enhance your presentation

Go to: File → New → [Toolkit](#), open the file and copy over the slides you want



Mott MacDonald | Presentation

45

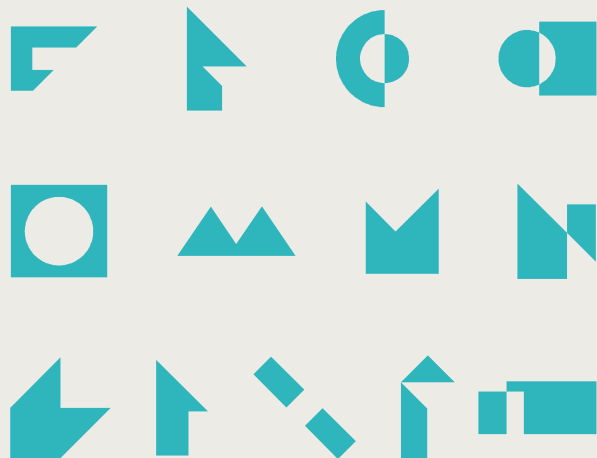
04 April 2019

Shapes and rules

Copy and paste onto your slide, follow the rules below

Change the colour according to your colour palette (cool or warm)

- Never use more than one shape per slide
- Whenever a shape is used it must be accompanied with a stone background
- Can be resized, flipped or rotated 45° or 90°
- Must overlap at least one edge of the slide
- Shapes go behind isolated (cut out) images
- Try not to use a shape with too much content (one side only please)



Mott MacDonald | Presentation

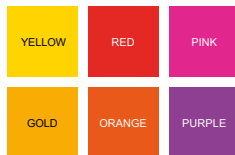
46

04 April 2019

Colours

We use **either cool or warm palette** within a presentation.

Warm palette



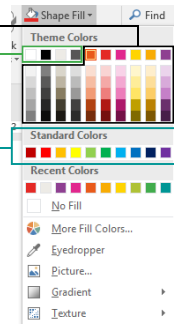
Cool palette



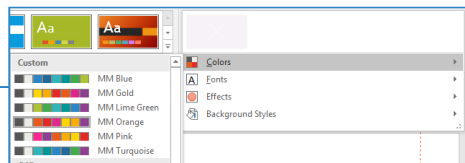
Use top line theme colours only, tints are mainly for tables and charts

DO NOT USE standard colours

Use the dark shades for text and light shades for background

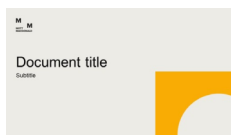


Colours can be changed using the variants menu (Design tab) → Variants → Colors → then select colour group of your choice)

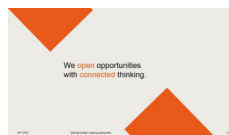
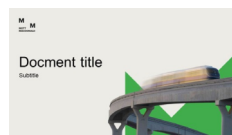


Quick checklist

Helping you stay on brand!



1. For title slide use **shape or shape + cut out photo**



2. Use **Arial** font only



3. Remove all effects – gradients, blurs, round corners and strokes from your graphics and photos.



4. Use a **photo or shape** per slide. Only a cut out photo can be used with a shape
Check our guidance on [what makes a photo on brand](#)



5. Need more slide options? Hold Ctrl and click [here](#) for the toolkit



Content

Title and content layout subtitle

If you type in the field titled "Click to add text", you get this text style. This is used as a header for new paragraphs

Highlight the text entered then hit tab and the text changes to black for second paragraph style.

To go back: Hold shift button then hit the tab button (While text is still highlighted)

- Repeat same trick again and it indents and changes to a smaller bullet style (sub bullet)
 - A fourth tab sequence is a further indented bullet
 - A fifth tab sequence is another indented bullet style