

Village of Ridgefield Park Supplemental CSO Team

Meeting Number 11

Virtual Meeting

July 30, 2020 10:00 AM

Attendees:

John Anlian – Mayor, Village of Ridgefield Park

Mark Olson – Commissioner for Public Works, Village of Ridgefield Park

Lewis Goldshore – Special Environmental Counsel, Village of Ridgefield Park

Bob Benecke – Financial Advisor, Village of Ridgefield park

Steve Quinn – Chairman, Ridgefield Park Environmental Commission and member, Planning Board

Linda Quinn – Resident, Ridgefield Park

Flo Muller – Resident, Ridgefield Park

John Dening, Sabina Martyn – Mott MacDonald

Marzooq Alebus, Jennifer Feltis, Dayvonn Jones, Johnathan Lakhicharran – NJDEP

Presentation slides attached.

Group Meeting Minutes

1. Introductions

- a. Meeting began at 10:00 AM with John Dening welcoming attendees, introductions and review of meeting agenda.
- b. John Dening opened the meeting with a safety minute presentation on driving safety, see attached presentation.
- c. John Dening presented the status of submissions to the NJDEP and noted that the end of current phase of the Long Term Control Plan (LTCP) had been extended from June 1 to October 1 due to COVID-19.

2. Presentation by John Dening on the Tentatively Selected LTCP, see attached presentation for details.

- a. Presented the modelled performance of the BCUA combined sewer system and the Ridgefield Park combined sewer system in the typical year.
- b. Presented the list of control programs that had been evaluated and the factors for consideration in selection of the preferred CSO control alternative. He indicated that the short-listed alternatives were consolidated tank storage and consolidated end of pipe treatment.
- c. Presented the draft results of the water quality modelling done by NJ CSO Group indicating that the receiving water, the Hackensack River does not meet water quality criteria both in baseline and 100% CSO control scenarios, and noted that stormwater load is almost equal to CSO load.
- d. Indicated that the presumption approach of 85% capture of annual wet weather volume had been selected as the control approach.

- e. Presented a summary of the community input that had been provided at the previous meeting.
 - f. Presented the tentatively selected plan, a consolidated CSO storage tank, potentially to be sited on the marble.com facility at Mt. Vernon Street and Industrial Avenue. He indicated that a feasibility study would be completed after the submission of the LTCP to confirm the best location for the tank.
 - g. Presented a drone video taken by the City of Elizabeth Police Department showing a similar tank construction in Elizabeth. Post project images showing the site restored to a rain garden were also shared.
 - h. Presented the knee of the curve analysis recommending that the tank be sized at 0.7 MGD to meet the control objective, in the interest of cost effectiveness. He then presented the costs of the tentatively selected LTCP.
 - i. Presented the draft implementation schedule and the cost considerations, including affordability and current tax burden, and potential financial impacts of COVID-19. He then presented projections for potential future sewer bill increases as a result of the LTCP implementation.
 - j. Presented the modelling results for the typical year, with the tentatively selected LTCP and indicated that it meets the 85% capture requirement.
 - k. Presented the post-construction compliance monitoring plan. He indicated that “adaptive management” would be included in the report so provide opportunities to reevaluate the plan over the course of implementation.
 - l. He asked for any input in the tentatively selected alternatives and preferences for implementation (see comments summarized in following section).
 - m. Presented the proposed approach for the next point of public consultation, suggesting that instead of a meeting, the team would record a presentation and post it to the Village website. The posting would then be advertised, and an email address would be provided for the public to send in comments.
 - n. Presented the schedule for completion of the LTCP.
3. Discussion and Questions – The following outlines questions that were asked during the presentation and the discussions that followed:
- a. A resident (Flo Muller) asked whether the surface restoration of storage tank in Ridgfield Park would look like the one shown in the City of Elizabeth.

John Dening responded that this would depend on what the Village decides. He indicated that the is tank is currently proposed for siting on the marble.com property, and could be constructed so that the company would be able to continue using the area. In the long term, if the Village acquired the property and converted it to a park, the restoration above the storage tank could reflect this.

- b. Lewis Goldshore noted that it is very difficult to estimate what the actual acquisition costs would be due to property owners and condemning authorities, differing views on valuation, and whether the property to be acquired would be an easement or a property acquisition. He noted that

properties west of Industrial Avenue may be subject to a State Tidelands claims, and the properties being considered as sites may not in fact be owned by those companies. As such the Village may need to coordinate with the Tidelands Bureau on any property required in this area.

John Dening indicated that he felt a conservative number was used for property acquisition to consider future higher value potential uses of properties. He also indicated that the LTCP report will note that Tidelands will need to be considered in site selection. This is more detailed site analysis including acquiring the Tidelands maps to confirm the location of tanks would be part of the subsequent feasibility study.

- c. The Mayor (John Anlian) asked whether it would be possible to extend the implementation over a longer period of time. He noted that there is no appreciable increase in water quality from implementing the CSO controls, thus it would be an unfair burden on the residents and taxpayers of Ridgefield Park, and it would be better if the schedule could be extended. He recommended that an extended schedule be proposed to the NJDEP even if the team thinks they will not accept it. He added that Newark and New York City are still dumping raw sewage into their waters and these pollutants are making their way to the Hackensack River due to the tides and Ridgefield Park should have to implement a CSO control plan before these cities.

John Dening responded that the currently proposed schedule extending to 2040 is fairly conservative as it is. He indicated that the loan period could potentially be extended to 30 years, and the team would look at whether the overall schedule could also be extended. He invited NJDEP to add any further input.

- d. A member of the Planning Board (Steve Quinn) asked why removing CSOs does not achieve water quality standards.

John Dening responded that this is because the section of the Hackensack River that passes through Ridgefield Park is characterized as a higher quality watercourse, therefore it has lower pathogen concentrations limit.

- e. A member of the Planning Board (Steve Quinn) asked, if surface runoff is a contributor to water quality would the tanks also capture surface water. He asked whether the Village was also accountable for controlling surface water.

John Dening indicated that the tanks would only capture surface runoff that goes to the combined sewer, and that surface runoff (stormwater) is regulated under a separate municipal separate storm sewer system (MS4) permit, which is an independent process. He indicated that there are current requirements for surface runoff but we don't know what the future requirements will be for capture or treatment of surface runoff.

- f. The Major (John Anlian) asked when the major polluters down the river, Newark and New York City, would be required to do what the Village is doing.

John Dening responded that New York City has been working on CSO control for some time, and has built tanks, and been upgrading treatment plants and sewers for many years. He indicated that CSO communities in New Jersey are on the same permit schedule as the Village of Ridgefield Park.

The Major (John Anlian) noted that the actual implementation of these other city's plans may be decades down the line, and suggested that it should be a condition of the Village's plan that these other big contributors should implement their CSO controls first so that the Village is not spending needlessly.

John Dening responded that the Village will likely not be able to make their plan conditional on other communities, and these other communities will have their own implementations schedules for their controls. He offered to set a meeting up with NJDEP to discuss this issue further.

Marzooq Alebus noted that there has been a lot of water quality modelling for the whole harbor, and the impact from downstream sources has been studied. He indicated that NJDEP does have a handle of the relative contribution, and CSO impacts from New York City do not impact the Hackensack River according to current modelling. Ongoing modelling will be completed, and EPA will have a role in managing how to attribute the obligations of the various parties, however, it will be an adaptive management process.

The Major (John Anlian) responded that if the contribution is not from New York City, there must be some pollutants from Jersey City and Newark. He noted that although he is pro-environmental and believes in improving water quality, he does not support spending taxpayer money if the ultimate water quality goal is not achieved, as such he would prefer it was implemented over a longer time period.

- g. A member of the Planning Board (Steve Quinn) asked whether the water quality standards for the Village are the same for the Hudson River, lower bay and lower Hackensack River.

John Dening responded that those waterbodies are characterized as SE2, as such they have a higher limit.

The member of the Planning Board (Steve Quinn) responded that if the waterbody near the Village is held to a higher standard, there should be some adjustment for the tidal situation.

John Dening responded that the NJDEP is looking at larger picture for water quality, with surface water MS4 and CSO other programs.

- h. A Commissioner (Mark Olson) asked whether the Village would right now meet the water quality standards for the Hudson River if the Hackensack River was measured in the same way.

Marzooq Alebus responded that the Hudson River has two standards, on the New York City side, there is a higher standard for primary contact. On the New Jersey side, the Hudson River is characterized as secondary contact, as such the water quality standard is lower. According to that standard, the Village would meet it, however it is possible that the EPA would increase the New Jersey standard in the future. He added that the ultimate goal is to eliminate raw sewage in our waterbodies. John Dening noted that even if the Hudson River is meeting the water quality standards, CSO communities that discharge to the Hudson River still need to propose CSO reductions in fulfillment of the LTCP requirements to meet the national CSO policy.

- i. The Major (John Anlian) responded that he agreed with the proposed public outreach to record a meeting and post it to the City's website. He added that after the presentation has been posted for 30 days, there should be an opportunity for a live hearing, in which the project team would provide a 10 minute summary of the proposed work and provide the community with the opportunity to ask questions. This would allow those who are not comfortable writing comments to provide input.
- j. The member of the Planning Board (Steve Quinn) requested that costs be presented as the increase to sewer bills on a quarterly or annual basis. He also suggested that a reverse 911 message could be sent to Village residents to inform them of the proposed LTCP, and asked for input from the Mayor.

The Major (John Anlian) indicated that the Village has been regularly putting out messages for COVID-19, and can send a message about the LTCP using the same platform. John Dening indicated that the cost could be presented as the increase to sewer bills, as suggested. He also noted that members of team will be expected to help with publicizing the LTCP presentation and sharing information.

- k. John Dening asked for input on how long the live presentation should be. A Commissioner (Mark Olson) suggested that it should be maximum 10 minutes. Jennifer Feltis suggested that there should be multiple venues for the public to provide comments and feedback on the proposed LTCP, such as email, phone, Facebook, etc. John Dening indicated that this could be done, and the presentation would be posted to the Village website, with an email and phone number included for feedback.

1. The Major (John Anlian) indicated that he appreciated that NJDEP was participating on the call. He indicated his understanding of the goal to try to stop raw sewage released into the waterways, and noted that the Village of Ridgefield Park is an older, affordable, blue collar community, and adding another \$500-1,000 per year to a tax bill would be a significant burden on the residents. He requested that NJDEP take this into consideration and treat the Village fairly based upon their circumstances.

Marzooq Alebus responded, indicating that NJDEP does understand the difficulties and complexities of the project, and noted that as they go through the LTCP and costs, they would be interacting more with the Village.

5. The meeting concluded at 11:30 AM.



Preliminary Selection and Implementation of Alternatives

Village of Ridgefield Park
Supplemental CSO Team
Meeting #11

Virtual Meeting

July 30, 2020

1

Ridgefield Park Supplemental CSO Team

Meeting No. 11 Agenda

- Safety Minute
- Project Status
- Tentative Selection of CSO Control Alternatives
 - Ridgefield Park
 - Cost and Schedule
 - Post Construction Compliance Monitoring
 - Adaptive Management
- Public Meeting
- Next Steps

Supplemental CSO Team Meeting #11

2


July 30, 2020

2

Safety Topic

Remembering How to Drive

Practice:

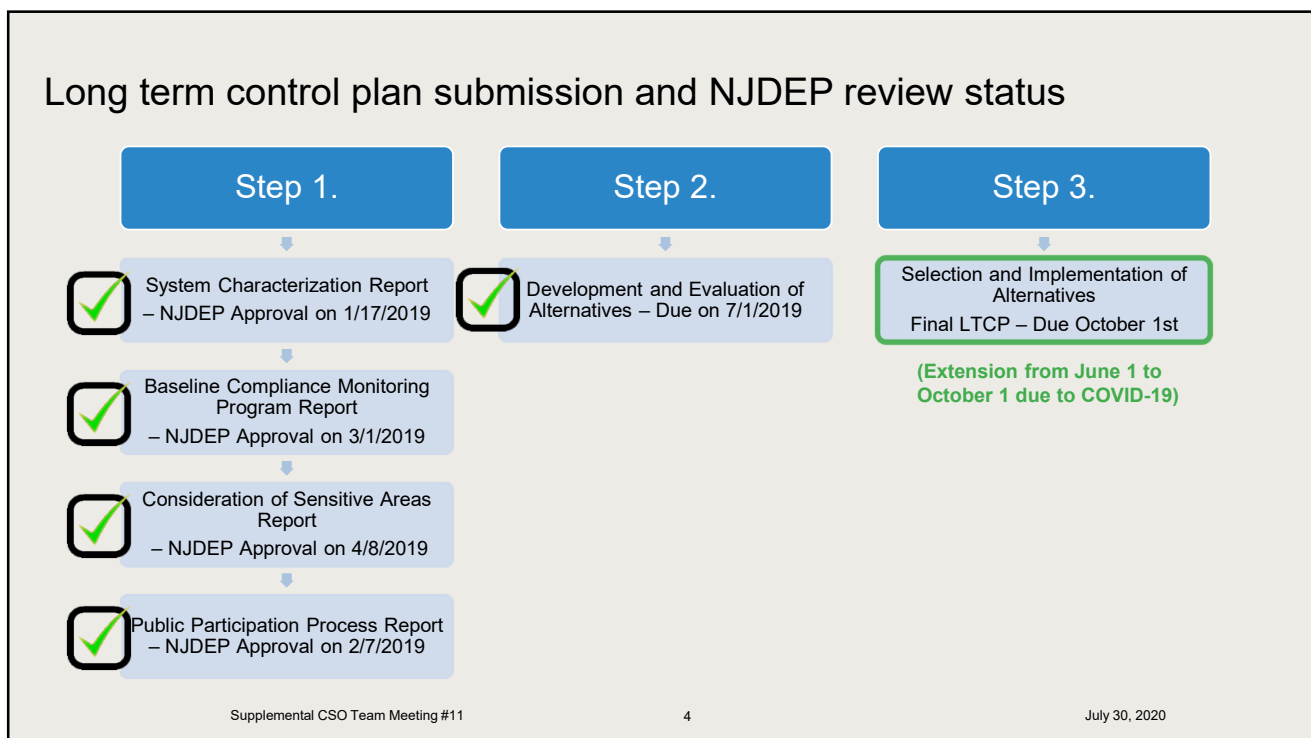
- 1
Turning radius
- 2
Signal before turning
- 3
Putting on seatbelt
- 4
Parallel parking
- 5
Which side your gas tank is on

Supplemental CSO Team Meeting #11

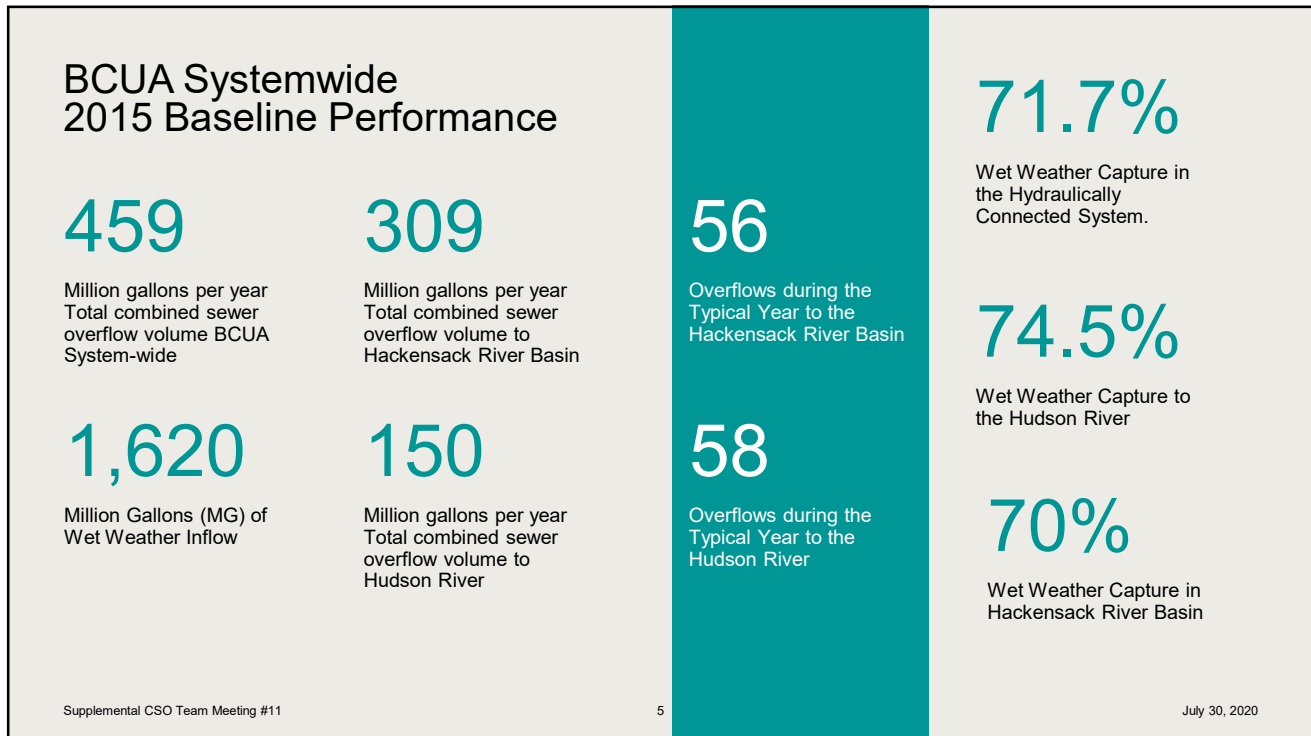
3

July 30, 2020

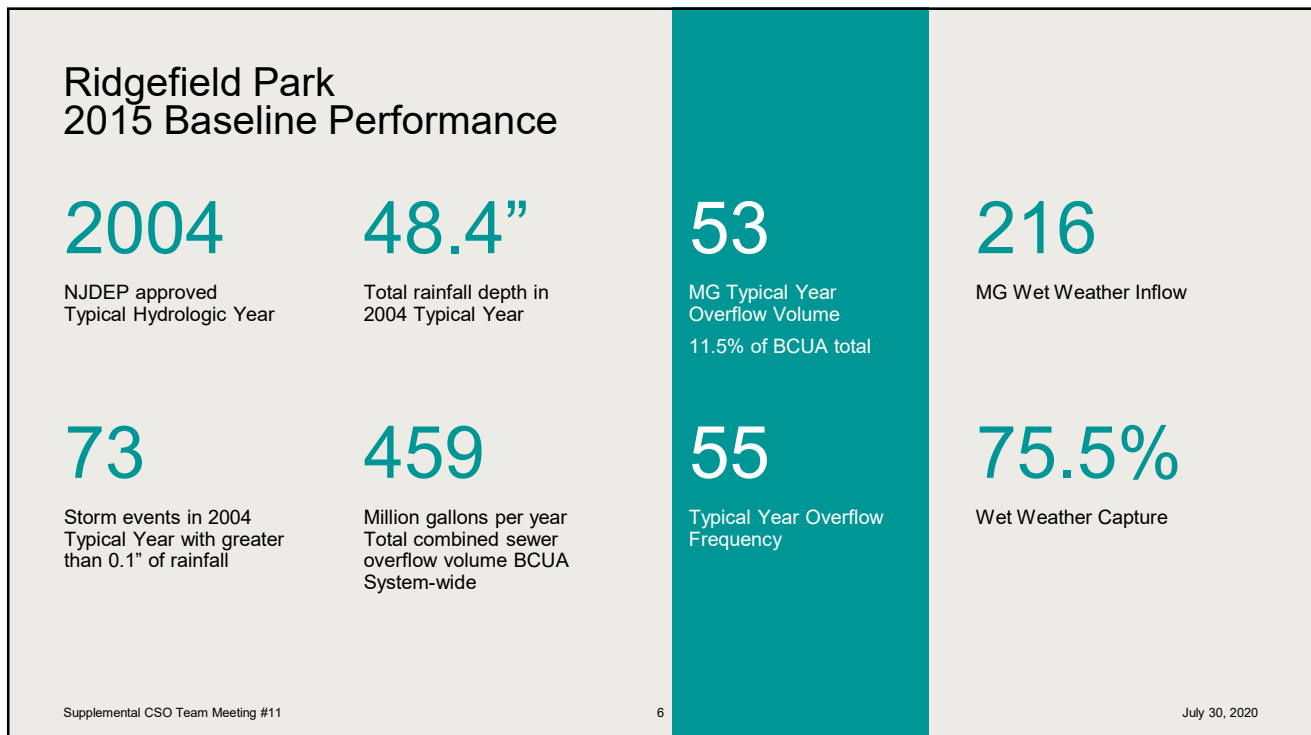
3



4



5



6

Alternatives Evaluation

Control Programs Evaluated



July 30, 2020

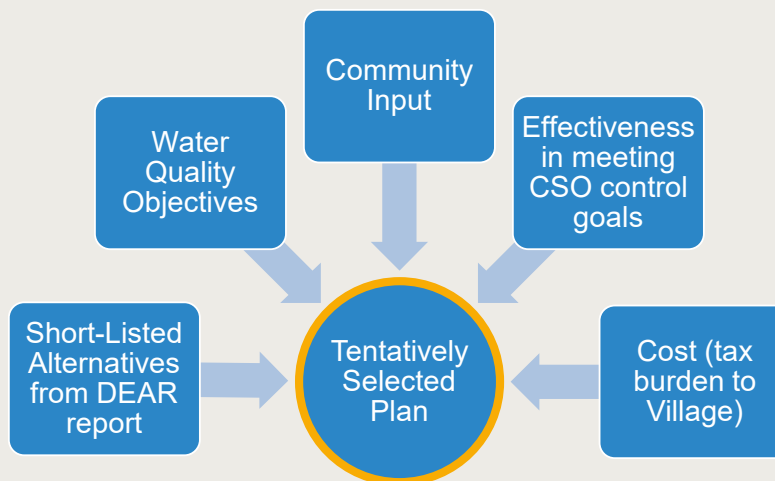
Supplemental CSO Team Meeting #11

7

7

Tentatively Selected Plan

Selection Process



Supplemental CSO Team Meeting #11

8

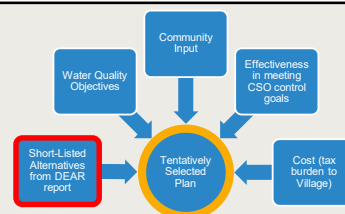
July 30, 2020

8

Rating of Ridgefield Park Alternatives

From Development and Evaluation of Alternatives Report

Requested SCSO Team input on rankings



Control Program	Cost	CSO Volume Reduction	CSO Frequency Reduction	Institutional Issues	Implementability	Public Acceptance	Weighted Score
1. Eliminate CSO-006A	NA	NA	NA	NA	NA	NA	NA
2. Consolidated Tank Storage	4	5	5	4	3	3	4.0
3. Tunnel	3	5	5	4	2	2	3.5
4. Consolidated End of Pipe Treatment	4	5	5	2	3	2	3.6
5. Sewer Separation	2	5	5	3	2	2	3.1
6. Green Infrastructure	1	1	1	5	4	5	2.7
Weighting	25%	15%	15%	15%	15%	15%	100%

Supplemental CSO Team Meeting #11

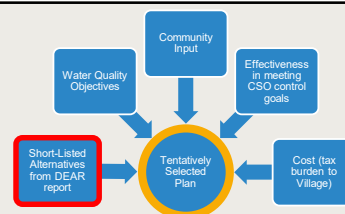
9

9

Short-Listed Alternatives

Presumption Approach Targeting 85 Percent Capture

- Control Program 2 - Consolidated Tank Storage
 - Best rating, least complex
- Control Program 4 - Consolidated End of Pipe Treatment
 - 2nd Best rating, higher cost, complexity, and community impact



Supplemental CSO Team Meeting #11

10

July 30, 2020

10

Water Quality Modeling

- Receiving water is the Hackensack River
- A complex water quality model was developed with regional communities (NJ CSO Group) to determine water quality of receiving waters, based on typical year.
- Hackensack River in the vicinity of BCUA is an SE1 water:
 - Enterocriterion of 35 cfu/100mL geometric mean is exceeded → water quality criteria is not attained:
 - under dry weather flow conditions; and
 - when CSOs are eliminated.

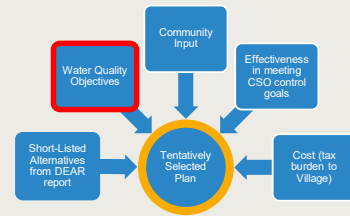


Table 6-2. AU Attainment in SE1 Waterbodies under Baseline and 100% Control Conditions

Assessment Unit Name	Assessment Unit Number	Baseline % Attainment	100% Control % Attainment
Hackensack R (Oradell to Old Tappan gage)	02030103170060-01	100.0	100.0
Hackensack R (Fort Lee Road to Oradell gage)	02030103180030-01	0.0	0.0

Source: Calibration and Validation of Pathogen Water Quality Model" Report (Draft, produced by NJ CSO Group / PVSC in April 2020)

Supplemental CSO Team Meeting #11

11

July 30, 2020

11

Water Quality Modeling



Stormwater has almost equal contribution to CSOs, significant dry weather sources:

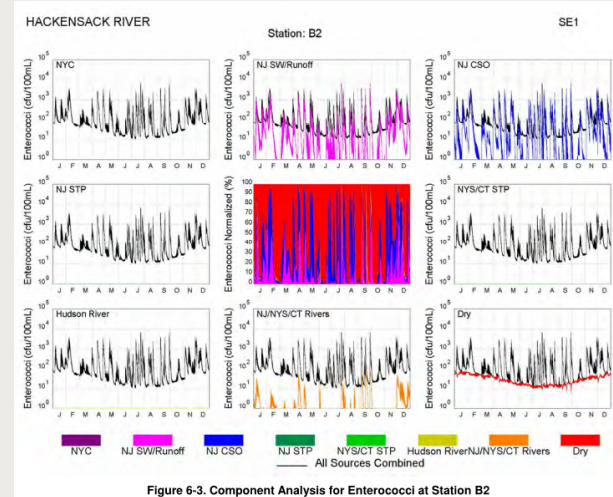


Figure 6-3. Component Analysis for Enterococci at Station B2

Source: Calibration and Validation of Pathogen Water Quality Model" Report (Draft, produced by NJ CSO Group / PVSC in April 2020)

Supplemental CSO Team Meeting #11

12

July 30, 2020

12

Control Approach Selection

Presumption Approach Targeting 85 Percent Capture

Presumption Approach (performance based)

- No less than 85 percent capture of annual overflow volume;
- No less than the equivalent mass of the pollutants causing water quality impairment; or
- No more than 4 overflows in the typical year

SELECTED as best balance between permit compliance, water quality benefit and allocation of municipal funds.

Demonstration Approach (water quality based)

- Use receiving water model to identify control level needed to meet WQ-based requirements

NOT SELECTED: WQ modelling not very insightful in demonstrating WQ improvements in receiving waters.

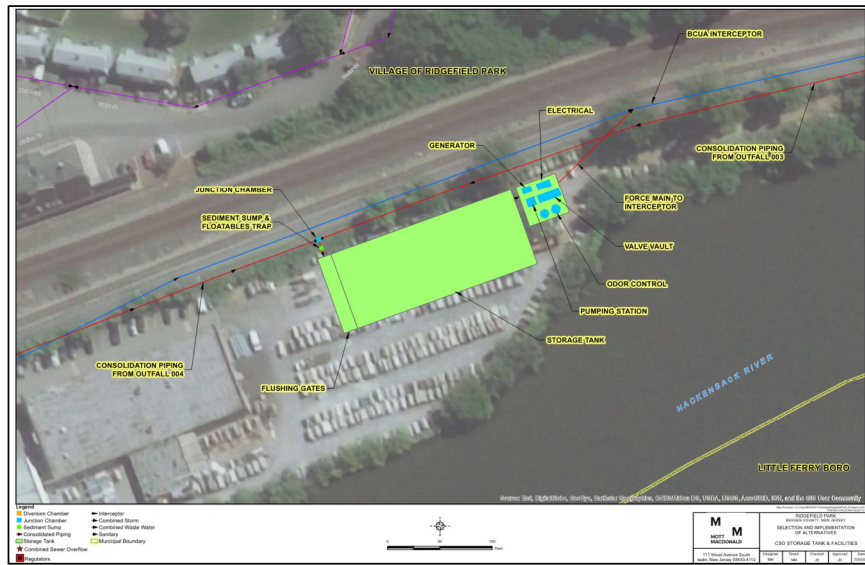
Control Approach Selection

Presumption Approach Targeting 85 Percent Capture

- Calculate in conjunction with other permittees.
- Meets requirements of National CSO Policy.
- Evaluate effectiveness of increased level of control (knee of the curve).

Tentatively Selected Plan – Subject to Change

Presumption Approach Targeting 85 Percent Capture



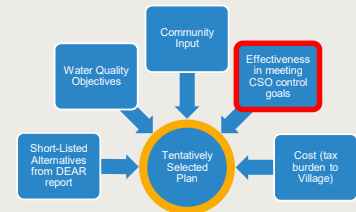
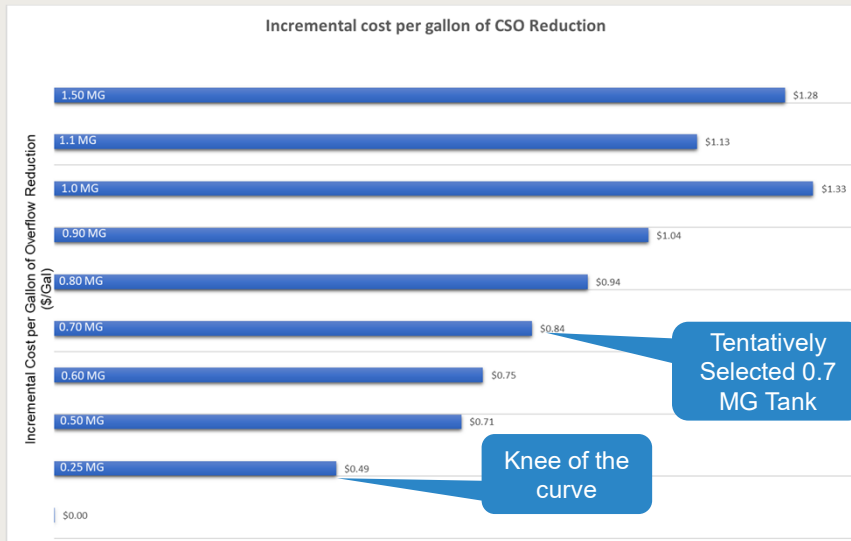
Supplemental CSO Team

July 30, 2020

17

Tentatively Selected Plan

Knee of the curve

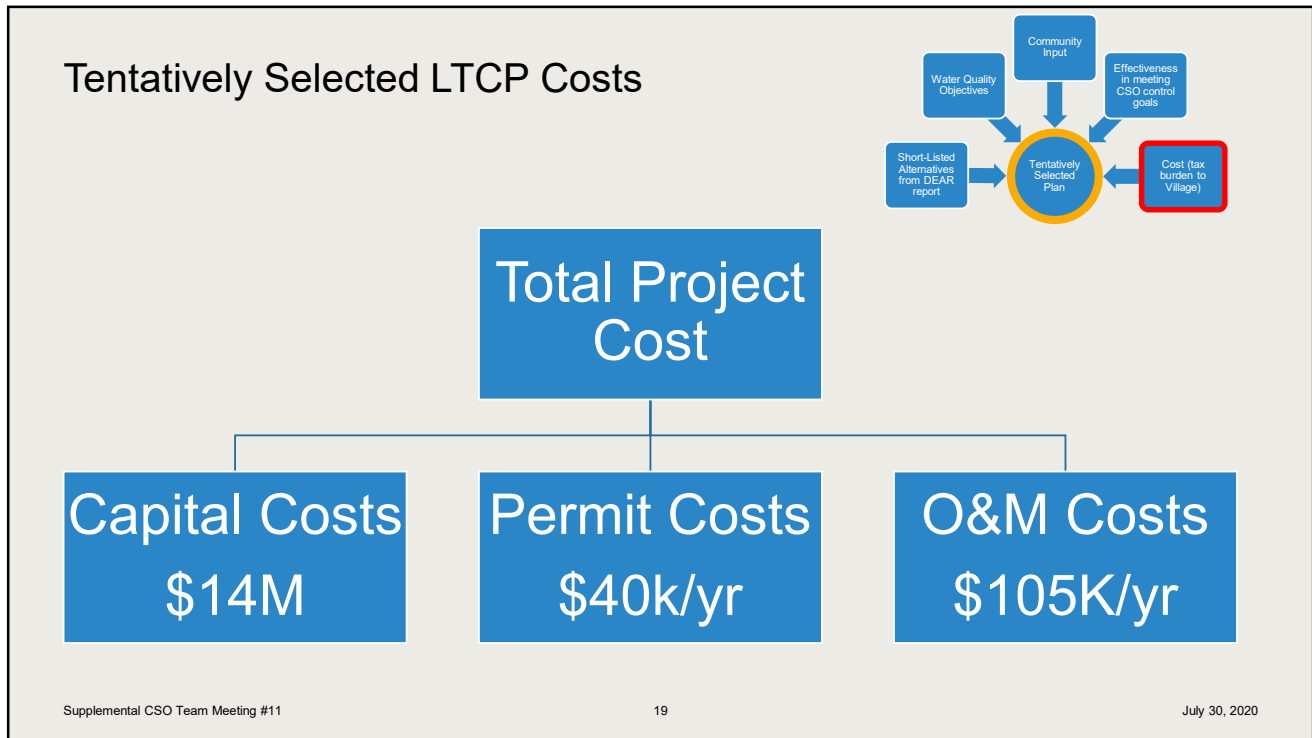


Supplemental CSO Team Meeting #11

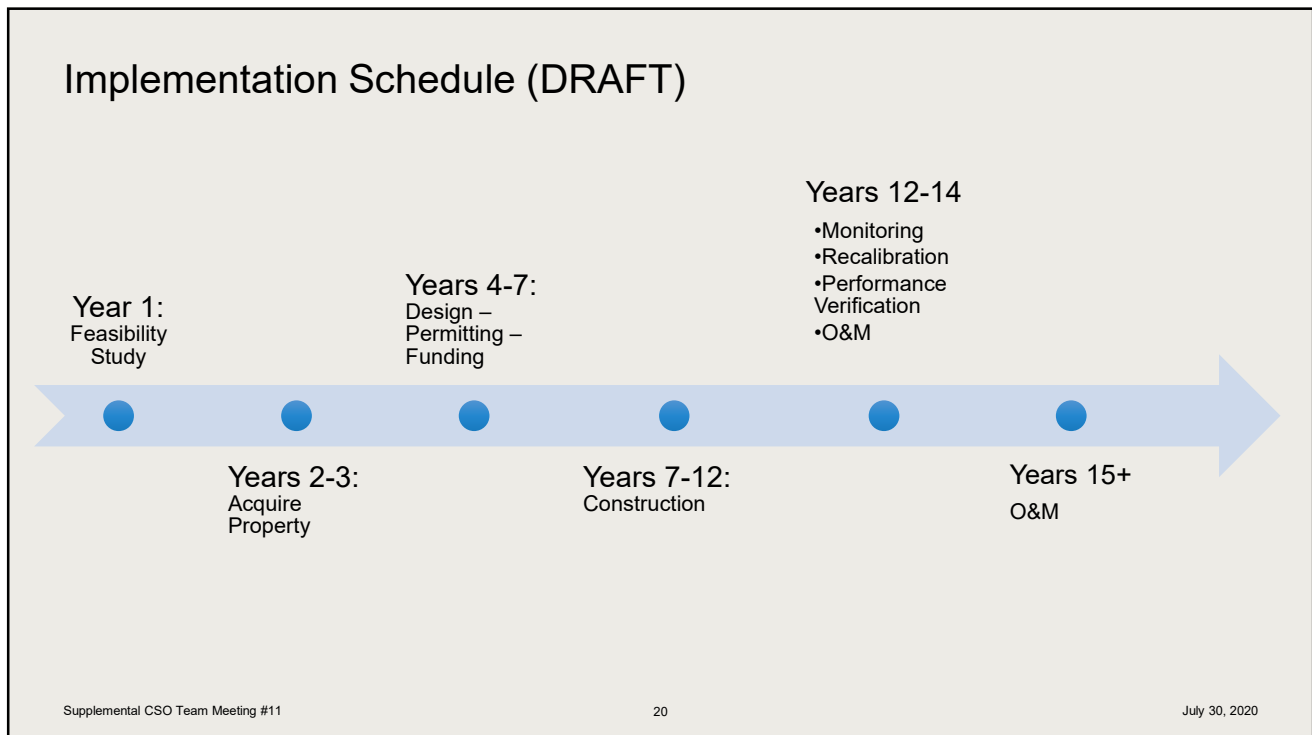
18

July 30, 2020

18



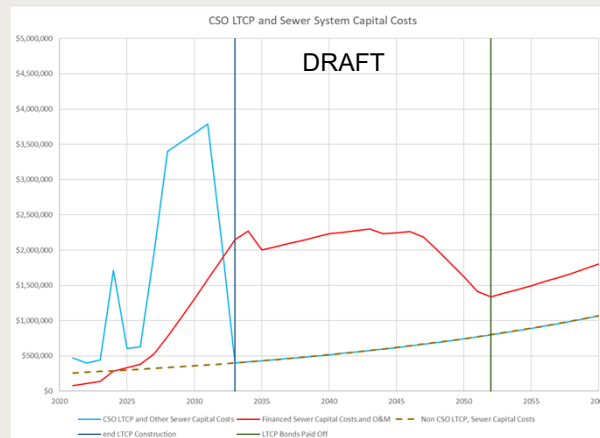
19



20

Cost Considerations

- Heavy tax burden, need to control costs.
- Village has many financial constraints, which makes even the recommended affordability consideration of 2% of MHI highly burdensome.
- COVID-19 pandemic may impact affordability and implementation schedule for CSO LTCP projects
- Potentially reduced household incomes and sewer utility revenues.
- Affordability analysis done for LTCP may no longer be accurate.



Supplemental CSO Team Meeting #11

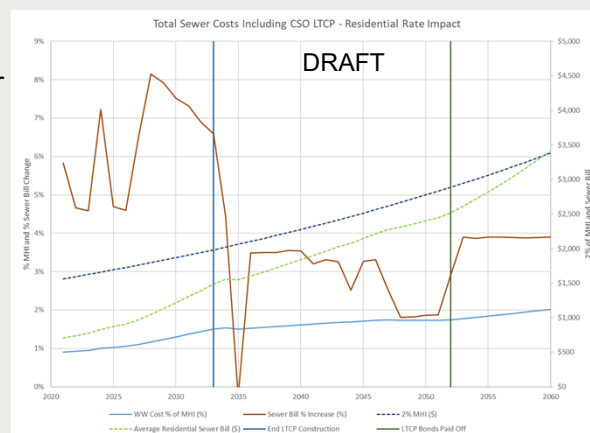
21

July 30, 2020

21

Cost Considerations

- Max Annual sewer bill increases of about 8%
- Total burden remains at less than 2% MHI for project life.

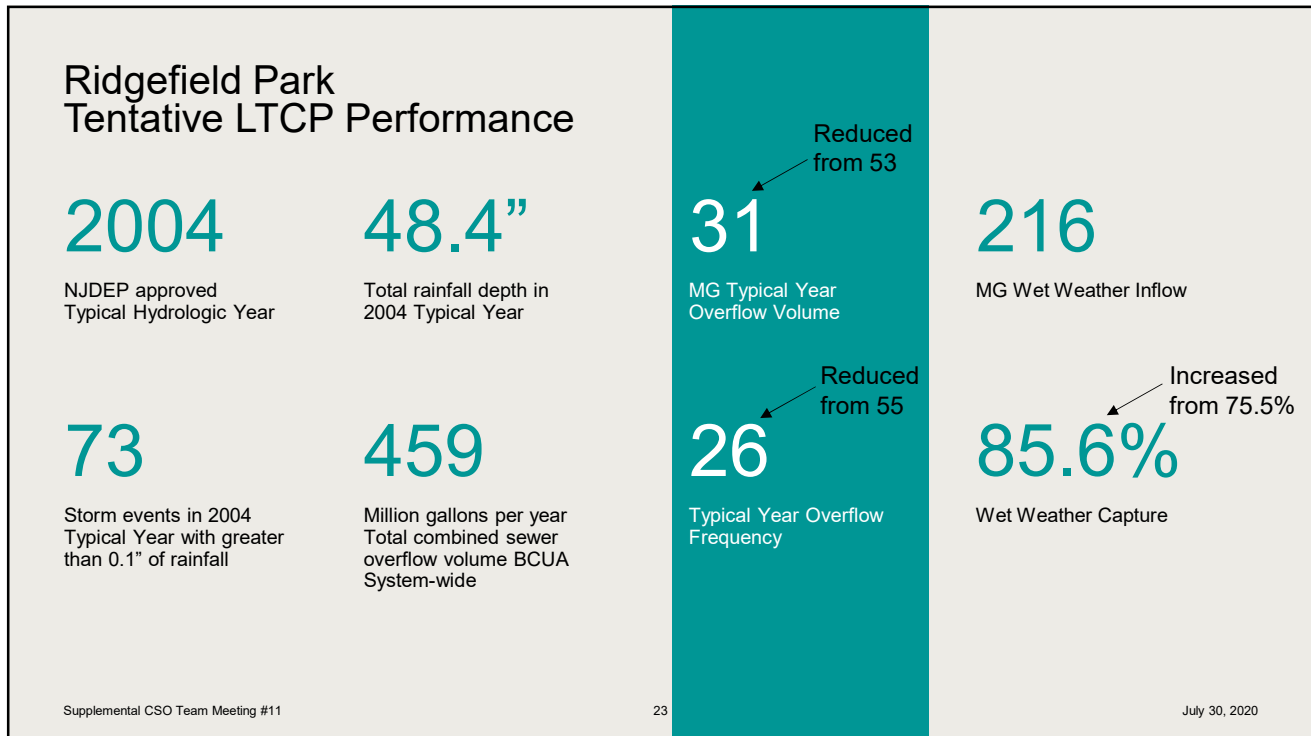


Supplemental CSO Team Meeting #11

22

July 30, 2020

22



23

Post-Construction Compliance Monitoring

Receiving water quality conditions

- Will be monitored and modeled by NJ CSO Group in coordination with sampling program from NJ Harbor Dischargers Group routine sampling program.

CSO facilities performance

- Will be monitored and modeled by VRP to characterize performance based on Typical Year modeling of system with CSO facilities in place
- Data will be used to recalibrate/verify the collection system model to determine compliance with the NJPDES permit
- Compliance based on Typical Year conditions, as compared to the baseline model.

Supplemental CSO Team Meeting #11

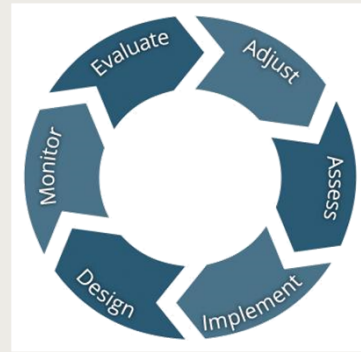
24

July 30, 2020

24

Adaptive Management

- **Adaptive management** to be included in LTCP
 - COVID-19 Impacts
 - Re-assess affordability throughout implementation schedule, based on emergent economic conditions beyond permittees' control
 - Include provisions to re-evaluate, revise and/or reschedule CSO controls as appropriate to reflect new technologies, new conditions and potential new funding sources



Supplemental CSO Group Input

- **Input on tentatively selected alternatives?**
 - Are your interests being considered?
 - Comments on:
 - Locations of facilities?
 - Types of facilities?
 - Cost?
- **Preferences for implementation?**
 - Concerns about construction disturbance?
 - Implementation sequence and schedule

Open Public “Meeting”

Tentatively Scheduled for Mid-August

Format / Venue

- Pre-record presentation and post to social media channels and Village website
- Increases accessibility - allows public to view presentation at any time
- Email address for public to provide feedback

Advertising

- Newspaper
- Social Media
- Community Groups
- Other?

Content

- What is a CSO
- Background on CSO LTCP process
- Alternatives considered
- Tentatively selected CSO control program
 - Schedule
 - Cost
 - Location
- Opportunities to provide input

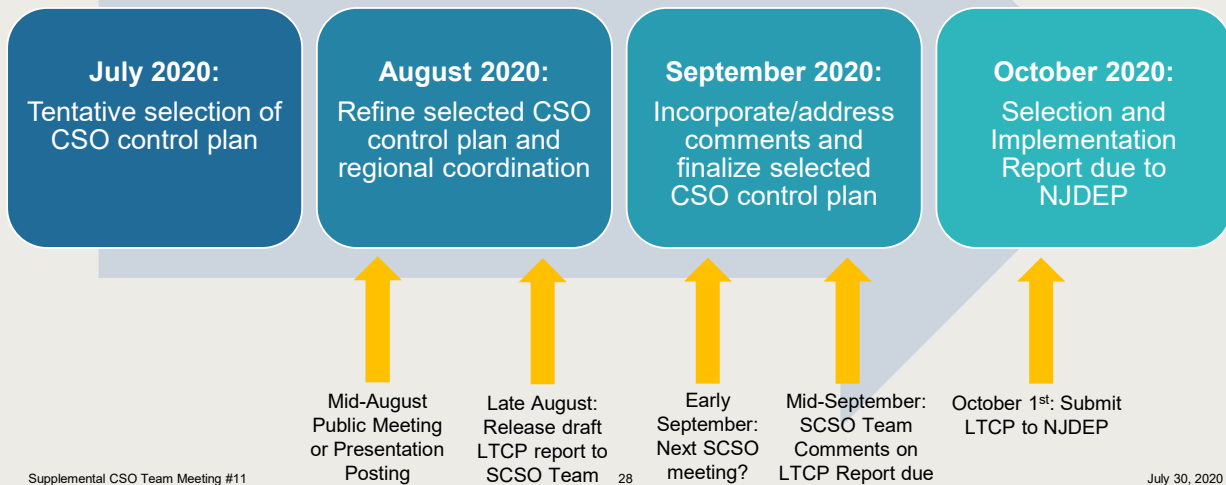
Supplemental CSO Team Meeting #11

27

July 30, 2020

27

Tentative CSO LTCP Schedule for Completion



Supplemental CSO Team Meeting #11

28

July 30, 2020

28

Questions?

July 30, 2020

Supplemental CSO Team Meeting #11

29

29

Thank You!

July 30, 2020

Supplemental CSO Team Meeting #11

30

30