

# about us



## Carpool Connection

Like Social Networking on Wheels

For more than 25 years, we have worked to reduce traffic by providing innovative transportation solutions.

During last year alone, we managed more than half-a-million passenger trips, saving more than 10,000 gallons of gasoline a day, while providing convenient and reliable mobility throughout the state's most densely populated counties.

In addition to Carpools, we manage the state's largest program of Shuttles and Vanpools for the corporate community, area colleges, universities and municipalities.

Our shuttles are equipped with GPS, Mobile Data Terminals and in-vehicle cameras to ensure safe, convenient travel every day of the year.

EZ Ride also offers innovative transportation solutions, such as bicycle and pedestrian services, car sharing, and transportation services for older adults and people with reduced mobility using a team of volunteer drivers.

To learn more about what EZ Ride can do for you or your company, visit [www.ezride.org](http://www.ezride.org).



eco-friendly | eco-nomical



### For more information:

Call Monday – Friday: 8am to 4pm

Meadowlink/EZ Ride  
144 Park Place East  
Wood-Ridge, NJ 07075

Tel. 201.939.4242  
Fax: 201.939.2630  
Email: [info@ezride.org](mailto:info@ezride.org)

[www.ezride.org](http://www.ezride.org)

SUPPORTED BY FRIENDS OF THE PLANET:

Rutgers University

NJIT

Kean University

Brookdale Community College

New Jersey Department of  
Transportation





Carpooling brings riders together and saves money

## Carpools save *everything*: gas, tolls, even the planet!

Did you know that most carpoolers save more than \$1,500 a year on gas, tolls, insurance and wear-and-tear on your car?

And people who carpool are more likely to enjoy their ride. Carpooling is social and brings riders together. It's like social media – on wheels and in person. By leaving their cars at home, carpool riders help reduce traffic, improve air quality and give the planet a break.

## Dude, where's my carpool?

What happens when a carpool member has to stay late or has an emergency? EZ Ride's got your back with the innovative "Emergency Ride Home" program. This guarantees registered riders up to three rides home per year for any emergency.

## Sign up now and get moving.

Complete an application. Mail or fax it to:  
Meadowlink/EZ Ride  
144 Park Place East  
Wood-Ridge, NJ 07075  
Fax: 201.939.2630

Or complete and submit the application on the EZ Ride website, [www.ezride.org](http://www.ezride.org).

EZ Ride will enter your information in our statewide database. Others may seek you out to join their carpool. Likewise, you can start your own carpool and reach out to them.

## Be cool. Carpool.

On the other hand, why wait for the phone to ring? Start your own carpool with your fellow students or co-workers. Use bulletin boards or online message boards to make it easy. Once you have two or three other riders, follow these easy steps:

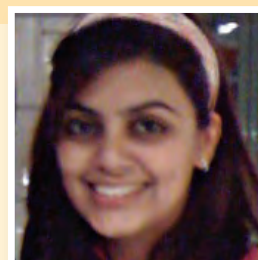
- Meet in person, by phone or email to discuss your commuting schedules;
- Consider a trial basis, even one or two days a week;
- Set ground rules. Who drives? How much do you each contribute?
- Compile contact information and keep each other informed. Make a back-up plan in case something happens.
- And remember to check with your insurance carrier for discounts.

If you need more riders, help is just a phone call away. Meadowlink can match you with its database of more than 20,000 commuters interested in sharing a ride. Maximize your carpool's potential – and your savings.

## Why wouldn't you carpool?

With all it has going for it, why wouldn't you carpool? Where else can you have fun with like-minded friends, save on everything and be socially responsible at the same time? Talk to your friends and start your own carpool today.

“Carpooling is awesome. Signing up was simple and now I save money every day, just by riding to school with my friends.”



Sadia Osman  
NJIT STUDENT